

Bulky Lace Yoke Pullover

Sizes S (M-L-XL-XXL) Finished Width 36 (40-44-48-52) inches



Materials

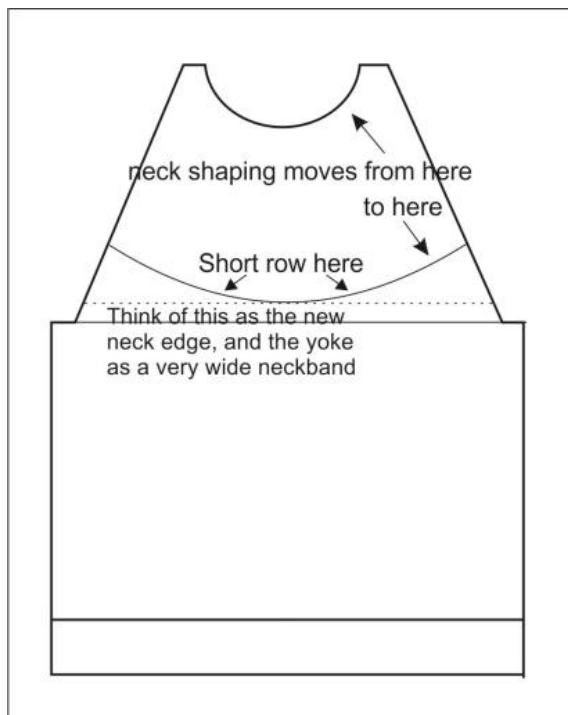
Ice Yarns Lorena 100 gram balls, 55% cotton, 45% acrylic, average length per ball is 140 m/153 yds. Manufacturer calls it a #4 yarn.
6 (6-7-8-8) balls required

Gauge: 16 sts and 24 rows per 10 cm, or 4 sts, 6 rows per inch after washing. The fabric is similar to bulky or aran wools.

Made on a Knitking Dual Gauge knitting machine, on 9 mm setting, but any bulky machine should work. It may also be possible to use a Brother KX350 on T 9 or 10.

Tension: 9, or whatever is required to obtain gauge.

You may substitute any other yarn that will knit to specified gauge.



Special Notes. Please Read

This garment is based on raglan styling. Back, Front, and Sleeves are knitted to the base of the yoke. The yoke/neck edge is then shaped by short rows, and at the same time the raglan armhole is shaped by binding off with the transfer tool.

The illustration on the left shows how the yoke relates to the body; this is the front, but the back and sleeves also have a curved top line where they join the yoke. The triangle sections just above the armholes are short rows, and they are necessary for the garment to fit correctly.

It does not matter whether the entire garment is knitted from bottom to top, or that the yoke is made first, then the sleeves, back and front are picked up from the bottom of the yoke and knitted downwards. Those short rowed triangles, or wedges are necessary

Even though this yarn is 45% acrylic, it behaves more like 100% cotton. It does not have much elasticity. You may add elastic to the ribbing if desired. You may also wish to add more rows to the ribbing, especially the bottom band.

This pattern uses T9 as the main tension throughout. If your yarn and/or tension is different, substitute your tension setting for those given in the pattern. One of the colors in this Lorena yarn knitted to a gauge of 16 sts 24 rows per 10 cm, and one knitted to 16 sts, 22 rows per 10 cm. I used the first one, 16 sts, 24 rows, for this pattern. If your gauge is 16 sts, 22 rows, all pieces will be longer than shown on the schematic. (The sleeve will be about 19.5” to the armhole, instead of 18”.) Take this into consideration if you cannot match gauge, and add or subtract a few rows just above the ribbing if necessary.

The pattern uses K2, P1 ribbing, and allowance is made to adjust the number of stitches in all bands so that the rib pattern is continuous after seaming. This means that it will sometimes be necessary to add or subtract stitches in the first stockinet row immediately above the rib, so that the body stitches are correct. This is not a mistake.

Standard pattern instructions are given below, and are meant for more experienced knitters. Knitters who need detailed, row-by-row instructions will find these at the end of the pattern. Follow the instructions for Back, Front, and Sleeves, exactly as written in the following instructions to the armhole, then go to the detailed instructions for armhole and neck edge shaping. Remember, we are considering the top edge of body and sleeve sections the “neck”, even though it is much lower than normal.

The yoke on this garment is actually a modified raglan, and is knitted in four sections, each continued up from the back, front, and sleeves. There are four seams, just as there are in all raglan garments, with the neckband added last, after three of the seams are sewn. This makes a neater finish at the neck edge.

Yoke lace pattern is worked manually, using the transfer tools. The stitch pattern in this yoke is created by moving stitches inwards onto a central stitch or “spine” in each multiple. Many rows will require using the transfer tool twice to move several stitches inwards.

*To transfer 6 stitches, use the 3-prong tool. Move 3 stitches left of the center “spine” stitch one needle to the right. The spine will now have two stitches on it, and each of the next 2 needles to its left have one stitch each. Again, with the 3-prong tool, move the next 3 stitches one needle to the right. 6 stitches have now been moved over one needle to the right. The needle where the 6th stitch was originally is empty; be sure it is in position B so that it will knit on the next row.

To make the right side of the pattern repeat, work from *, but in reverse. That is, move all 6 stitches one needle to the left. The spine needle will now have 3 stitches on it, and the needle where the 6th stitch was originally is empty. Be sure the empty needle is in work position.

Repeat from * all the way across the row. Knit 2 rows. Continue to make the transfers in the same manner, following the chart from the bottom up. When there are 5 transferred stitches, move the first three with the 3-prong tool, then move the remaining 2 stitches with the 2-prong tool. Likewise, to move 4 stitches, make two transfers with the 2-prong tool.

Back

Cast on 74 (80-89-98-104-113) sts, from 37 (40-44-49-52-56) L of center to 37 (40-45-49-52-57) R of center.

RC 000. T 8. Knit 8 rows and convert to K2, P1 ribbing, dropping and relatching every 3rd stitch as a K stitch.

RC 6. Decrease 1 st on left side for sizes S and XL; increase 1 st on left side for sizes M and XXL. There are now 73 (81-89-97-105-113) sts.

T 9. Knit even to RC 32. Decrease 1 st both sides on this and every following 10th row a total of 3 times. 67 (75-83-91-99-107) sts remain.

Knit even to RC 66. Increase 1 st both sides on this and every following 8th row a total of 3 times. 73 (81-89-97-105-113) sts.

Knit even to armhole, RC 90. (*For detailed instructions, skip to the end of the pattern. Standard instructions for raglan and neck shaping are below.*)

Shape Raglan Armholes

Bind off each side, every other row, 2 (4-5-7-9-11) sts 1 time, 3 sts 0 (0-1-1-1-1) time, 2 sts 0 (2-2-3-3-3) times, 1 st 5 (3-3-3-5-7) times.

Shape Neck

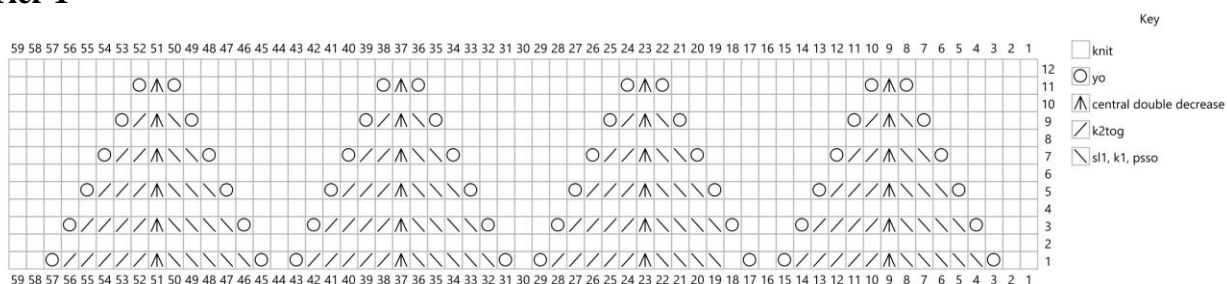
At the same time, on RC 94 (94-96-98-102-106) begin neck shaping. Place center 23 sts, plus all sts left of center sts into HP. Continuing raglan armhole decreases as established, KWK. Now place 6 more sts into HP every 2 rows 2 times.

RC 102 (102-104-106-110-114) Place remaining 6 sts on right side also into HP. This completes the right neck and raglan. Cut yarn and place carriage on left side of bed.

Reset row counter to 94 (94-96-98-102-106). Work left neck and raglan to correspond, reversing shaping. End with carriage on left. Cancel hold setting on carriage. Knit 1 row over all 59 sts. End with carriage on right. All shaping is now complete.

Back Yoke

Tier 1



RC 000. Begin at bottom of chart. **Pattern Set-Up:** Pull the 9th, then every following 14th needle forward slightly, but do not allow the stitches to slide behind the latches. This marks the central spine stitch of each repeat and makes it easier to transfer correctly. Transfer 6 stitches left of each spine stitch one needle to the right, then transfer the 6 stitches right of each spine stitch one needle to the

left. There are now three stitches on each spine needle, and the 6th needle each side of every spine stitch is empty. Be sure these empty needles are in work position, then knit 2 rows.

Continue working in the same manner, following the chart upwards, to RC 11, as follows:

RC 2: transfer 5 stitches both sides of each spine stitch, knit 2 rows.

RC 4: transfer 4 stitches both sides of each spine stitch, knit 2 rows

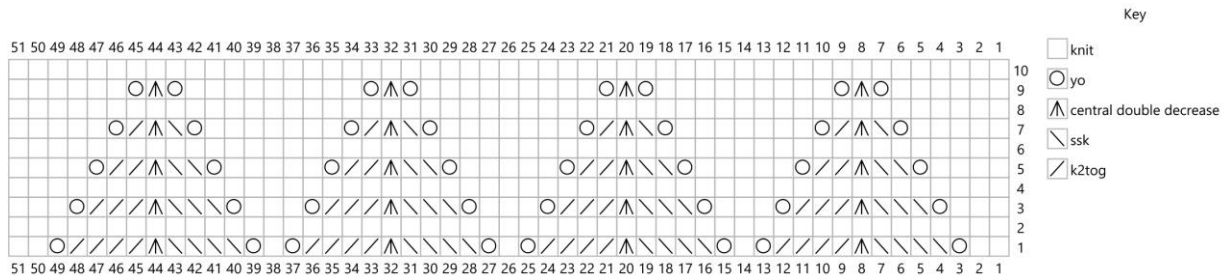
RC 6: transfer 3 stitches both sides of each spine stitch, knit 2 rows

RC 8: transfer 2 stitches both sides of each spine stitch, knit 2 rows

RC 10: transfer 1 stitch both sides of each spine stitch. **Take all of the emptied needles back to position A so they cannot knit. Knit just 1 row, ending carriage on left.**

Remove fabric on waste yarn. Place the carriage on the left side of the bed.

Tier 2



Bring forward 51 needles, from 25L to 26R, and rehang the main color stitches from waste yarn. Do not pick up anything in the spaces left from the empty needles, simply skip them. This creates decreases across the row and is how the yoke is shaped into a curve.

RC 11: Rethread the carriage with main color and knit 1 row.

Pattern Set-Up: Pull the 8th, then every following 12th needle forward slightly to mark the spine stitch.

RC 12: transfer 5 stitches both sides of each spine stitch, knit 2 rows.

RC 14: transfer 4 stitches both sides of each spine stitch, knit 2 rows

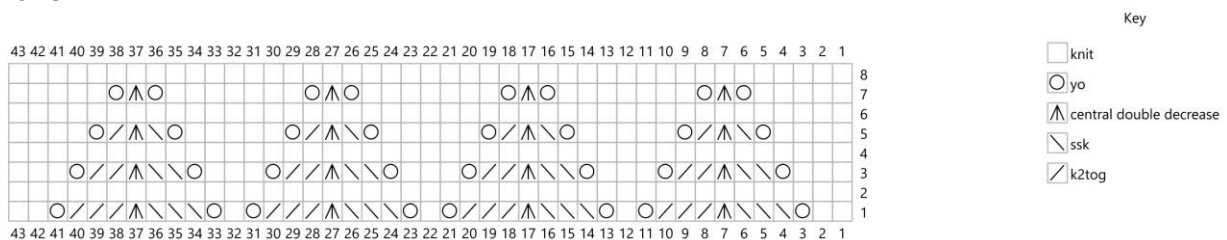
RC 16: transfer 3 stitches both sides of each spine stitch, knit 2 rows

RC 18: transfer 2 stitches both sides of each spine stitch, knit 2 rows

RC 20: transfer 1 stitch both sides of each spine stitch. **Take all of the emptied needles back to position A so they cannot knit. Knit just 1 row, ending carriage on left.**

Remove fabric on waste yarn. Place the carriage on the left side of the bed.

Tier 3



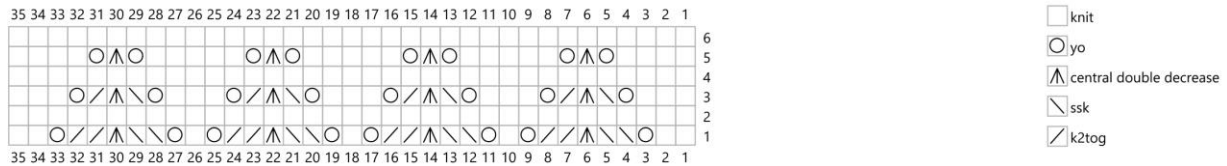
Bring forward 43 needles, from 21L to 22R, and rehang the main color stitches from waste yarn. RC 21: Rethread the carriage with main color and knit 1 row.

Pattern Set-Up: Pull the 7th, then every following 10th needle forward slightly to mark the spine stitch.

RC 22: transfer 4 stitches both sides of each spine stitch, knit 2 rows.

RC 24: transfer 3 stitches both sides of each spine stitch, knit 2 rows
 RC 26: transfer 2 stitches both sides of each spine stitch, knit 2 rows
 RC 28: transfer 1 stitch both sides of each spine stitch. **Take all of the emptied needles back to position A so they cannot knit. Knit just 1 row, ending carriage on left.**
 Remove fabric on waste yarn. Place the carriage on the left side of the bed.

Tier 4



Bring forward 35 needles, from 17L to 18R, and rehang the main color stitches from waste yarn. RC 29: Rethread the carriage with main color and knit 1 row.
 Pattern Set-Up: Pull the 6th, then every following 8th needle forward slightly to mark the spine stitch.
 RC 30: transfer 3 stitches both sides of each spine stitch, knit 2 rows
 RC 32: transfer 2 stitches both sides of each spine stitch, knit 2 rows
 RC 34: transfer 1 stitch both sides of each spine stitch. **Take all of the emptied needles back to position A. Knit just 1 row, ending carriage on left.**
 Remove fabric on waste yarn.

Front

Work same as Back to armholes, RC 90. (*For detailed instructions, skip to the end of the pattern. Standard instructions for raglan and neck shaping are below.*)

Shape Raglan Armholes

Bind off each side, every other row, 2 (4-5-7-9-11) sts 1 time, 3 sts 0 (0-1-1-1-1) time, 2 sts 0 (2-2-3-3-3) times, 1 st 5 (3-3-3-5-7) times.

Shape Neck

At the same time, on RC 92 (92-94-96-100-104) begin neck shaping. Place center 11 sts, plus all sts left of center sts into HP. Continuing raglan armhole decreases as established, KWK. Now place 5 more sts into HP every 2 rows 4 times.

RC 102 (102-104-106-110-114) Place remaining 4 sts on right side also into HP. This completes the right neck and raglan. Cut yarn and place carriage on left side of bed.

Reset row counter to 90 (90-92-94-98-102). Work left neck and raglan to correspond, reversing shaping. End with carriage on left. Cancel hold setting on carriage. Knit 1 row over all 59 sts.

End with carriage on right. All shaping is now complete.

Yoke

Make exactly the same as for Back Yoke.

Remove fabric on waste yarn.

Long Sleeves

Cast on 32 (32-35-35-38-41) sts, from 16 (16-17-17-19-20) L of center to 16 (16-18-18-19-21) R of center.

RC 000. T 7. Knit 12 rows and convert to K2, P1 ribbing, dropping relatching every 3rd stitch as a K stitch.

RC 12. Increase 3 (3-4-4-7-8) sts evenly across. Either move stitches outwards with the transfer tools, or remove the cuff on waste yarn and rehang. With either method, skip a needle for each increase, then pick up the purl bump to fill in the empty needle. 35 (35-39-39-45-49) sts.

Increase on sides of sleeve as follows:

S: 1 st every 20 rows 4 times; knit even to RC 92.

M: 1 st every 9 rows 8 times; knit even to RC 92.

L: 1 st every 8 rows 3 times, then 1 st every 7 rows 7 times; knit even to RC 92.

XL: 1 st every 6 rows 5 times, then 1 st every 5 rows 9 times; knit even to RC 92.

XXL: 1 st every 5 rows 15 times; knit even to RC 92.

XXL: 1 st every 5 rows 12 times, 1 st every 4 rows 4 times; knit even to RC 92.

There are now 43 (51-59-67-75-83) sts

**

Increase 1 st both sides on this and every following 2nd row a total of 8 times. 59 (67-75-83-91-99) sts.

Knit even to armhole, RC 108. (*For detailed instructions, skip to the end of the pattern.*

Standard instructions for raglan and neck shaping are below.)

Shape Raglan Armholes

Bind off each side, every other row, 2 (4-5-7-9-11) sts 1 time, 3 sts 0 (0-1-1-1-1) time, 2 sts 0 (2-2-3-3-3) times, 1 st 5 (3-3-3-5-7) times.

Shape Neck Edge

At the same time, on RC 114 (114-116-118-122-126) begin neck shaping. Place center 21 sts, plus all sts left of center sts into HP. Continuing raglan armhole decreases as established, KWK. Now place 6 more sts into HP, KWK.

RC 120 (120-122-124-128-132) Place remaining 6 sts on right side also into HP. This completes the right neck and raglan. Cut yarn and place carriage on left side of bed.

Reset row counter to 114 (114-116-118-122-126). Work left neck and raglan to correspond, reversing shaping. End with carriage on left. Cancel hold setting on carriage. Knit 1 row over all 45 sts. End with carriage on right. All shaping is now complete.

Short Sleeves

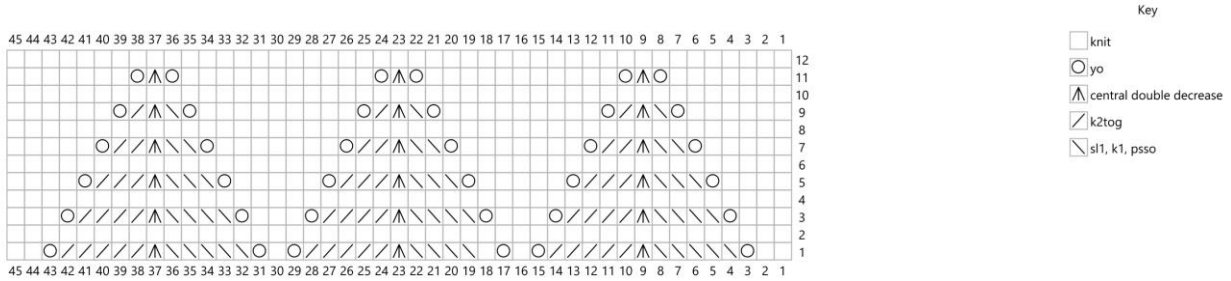
Cast on 44 (50-59-65-75-83) sts, from 22 (25-29-32-37-41)L to 22 (25-30-33-38-42)R of center.

RC 000. T 7. Knit 6 rows and convert to K2, P1 ribbing.

Decrease 1 st on size S, increase 1 st on size M, and increase 2 sts on size XL. 43 (51-59-67-75-83) sts. This is done so that the K2, P1 ribbing comes out even on both sides. Now work as for long sleeves, starting at **. (Set row counter to 92 at this point to make it less confusing.)

Sleeve Yoke

Tier 1



RC 000. Begin at bottom of chart. **Pattern Set-Up:** Pull the 9th, then every following 14th needle forward slightly, but do not allow the stitches to slide behind the latches. This marks the central spine stitch of each repeat and makes it easier to transfer correctly. Transfer 6 stitches left of each spine stitch one needle to the right, then transfer the 6 stitches right of each spine stitch one needle to the left. There are now three stitches on each spine needle, and the 6th needle each side of every spine stitch is empty. Be sure these empty needles are in work position, then knit 2 rows.

Continue working in the same manner, following the chart upwards, to RC 11, as follows:

RC 2: transfer 5 stitches both sides of each spine stitch, knit 2 rows.

RC 4: transfer 4 stitches both sides of each spine stitch, knit 2 rows

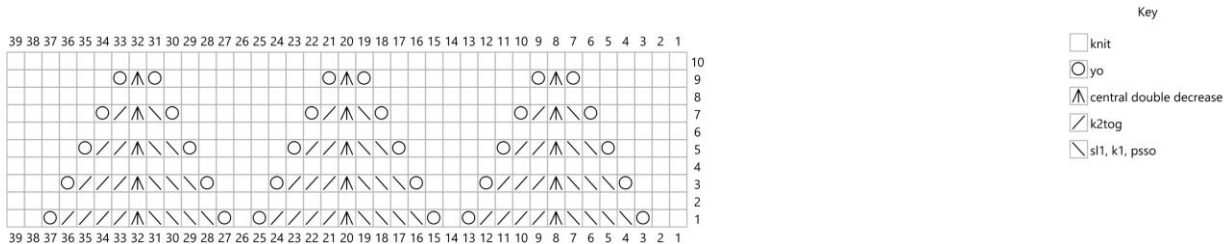
RC 6: transfer 3 stitches both sides of each spine stitch, knit 2 rows

RC 8: transfer 2 stitches both sides of each spine stitch, knit 2 rows

RC 10: transfer 1 stitch both sides of each spine stitch. **Take all of the emptied needles back to position A so they cannot knit. Knit just 1 row, ending carriage on left.**

Remove fabric on waste yarn. Place the carriage on the left side of the bed.

Tier 2



Bring forward 39 needles, from 19L to 20R, and rehang the main color stitches from waste yarn. Do not pick up anything in the spaces left from the empty needles, simply skip them. This creates decreases across the row and is how the yoke is shaped into a curve.

RC 11: Rethread the carriage with main color and knit 1 row.

Pattern Set-Up: Pull the 8th, then every following 12th needle forward slightly to mark the spine stitch.

RC 12: transfer 5 stitches both sides of each spine stitch, knit 2 rows.

RC 14: transfer 4 stitches both sides of each spine stitch, knit 2 rows

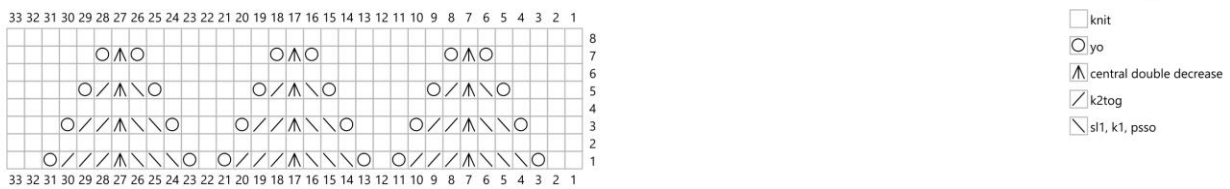
RC 16: transfer 3 stitches both sides of each spine stitch, knit 2 rows

RC 18: transfer 2 stitches both sides of each spine stitch, knit 2 rows

RC 20: transfer 1 stitch both sides of each spine stitch. **Take all of the emptied needles back to position A so they cannot knit. Knit just 1 row, ending carriage on left.**

Remove fabric on waste yarn. Place the carriage on the left side of the bed.

Tier 3



Bring forward 33 needles, from 16L to 17R, and rehang the main color stitches from waste yarn.

RC 21: Rethread the carriage with main color and knit 1 row.

Pattern Set-Up: Pull the 7th, then every following 10th needle forward slightly to mark the spine stitch.

RC 22: transfer 4 stitches both sides of each spine stitch, knit 2 rows.

RC 24: transfer 3 stitches both sides of each spine stitch, knit 2 rows

RC 26: transfer 2 stitches both sides of each spine stitch, knit 2 rows

RC 28: transfer 1 stitch both sides of each spine stitch. **Take all of the emptied needles back to position A so they cannot knit. Knit just 1 row, ending carriage on left.**

Remove fabric on waste yarn. Place the carriage on the left side of the bed.

Tier 4



Bring forward 27 needles, from 13L to 14R, and rehang the main color stitches from waste yarn. RC

29: Rethread the carriage with main color and knit 1 row.

Pattern Set-Up: Pull the 6th, then every following 8th needle forward slightly to mark the spine stitch.

RC 30: transfer 3 stitches both sides of each spine stitch, knit 2 rows

RC 32: transfer 2 stitches both sides of each spine stitch, knit 2 rows

RC 34: transfer 1 stitch both sides of each spine stitch. **Take all of the emptied needles back to position A. Knit just 1 row, ending carriage on left.**

Remove fabric on waste yarn.

Neckband

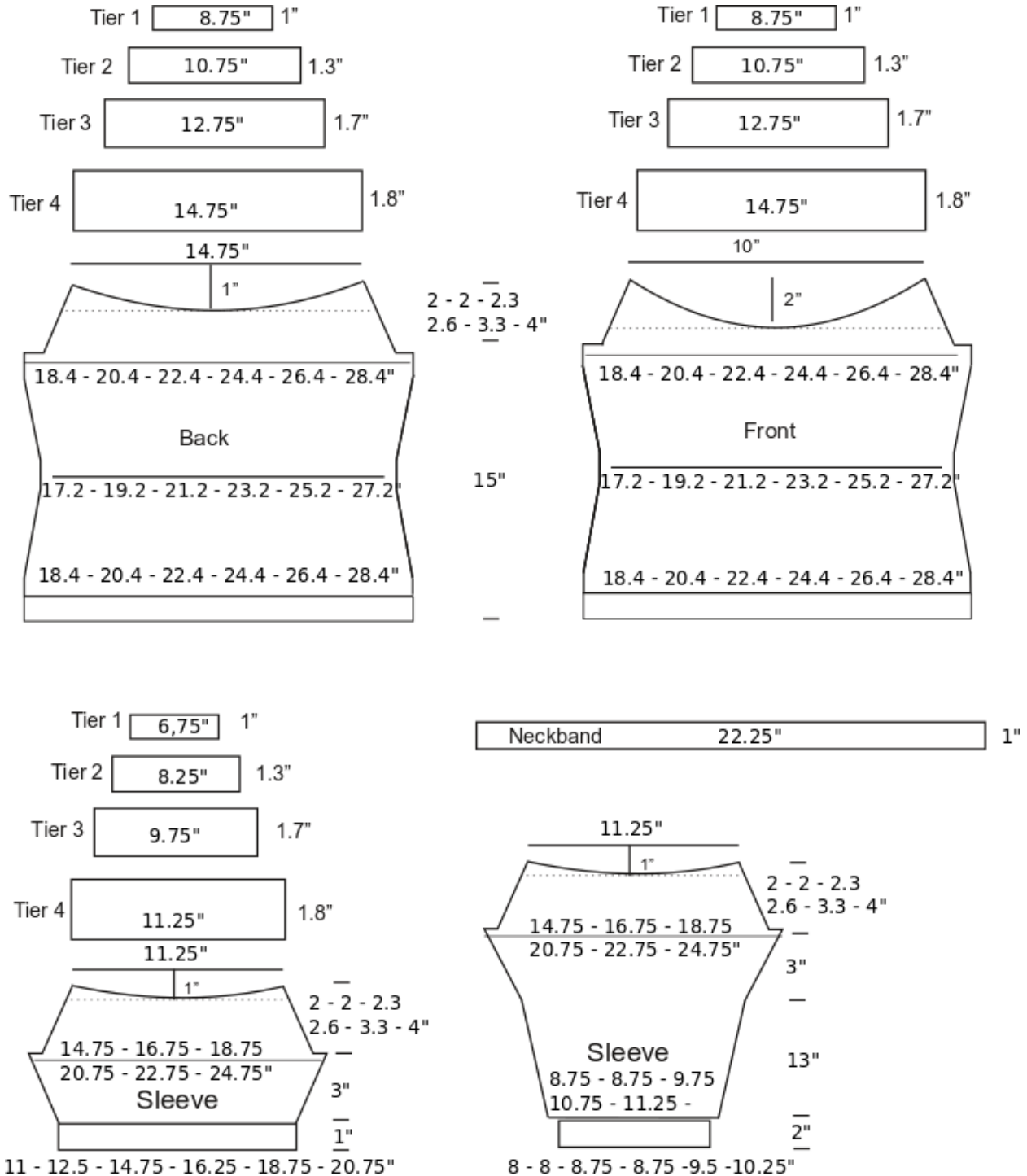
Note: this pattern has only one size neckband, due to the yoke stitch pattern repeats. As drafted, it creates a neckband 22.25" in circumference. If you wish a smaller neckband, either reduce the tension when knitting the band, or decrease a few stitches when rehangng the garment. If you prefer a larger neckband, it is better to increase a few stitches when rehangng the garment.

It is easier to sew the raglan seams if garment pieces are blocked lightly first. Be sure your yarn will tolerate steam if that is how you plan to block; test this using the gauge swatch. Many modern soft synthetic yarns cannot be steamed, and it is better to find this out by testing on the swatch.

Sew front raglan seams, and right back raglan seam. Leave left back raglan seam open. With knit side of garment toward machine, pick up 90 sts around neck. Be sure to also pick up the live stitches

in the raglan seams and hang them on corresponding needles; there will be 2 stitches on the needles on each side of the three sewn raglan seams. To keep continuity of K2, P1 ribbing, decrease 1 stitch.

RC 000. T 9, knit 2 rows. T 8, knit 2 rows. T 7, knit 2 rows. Manually knit 1 loose row. Bind off using stitch through stitch method. Sew remaining seams. Work in yarn ends.



Detailed Instructions for Raglan Armhole and Neck Edge Shaping

Size 36

Back

There are 73 sts in work position, from 36L – 37R. End with carriage on right.

RC 90: Bind off 2 sts at the beginning of the next 2 rows. 69 sts remain, from 34L – 35R.

RC 92: Bind off 1 st at the beginning of the next 2 rows. 67 sts remain, from 33L – 34R.

RC 94: Bind off 1 st at the beginning of the next 2 rows. 65 sts remain, from 32L – 33R.

Neck/raglan shaping, right side

Place center 23 sts, plus all remaining stitches on the left side of garment into HP. (Needles 32L – 12R are in HP, and 21 needles, from 13R – 33R are in WP.)

Work on right side of neck and armhole only from this point onwards.

RC 96: Bind off 1 st on R. KWK. 20 sts, needles 13R – 32R, remain in WP.

RC 98: Place 6 sts into HP on left for neck, bind off 1 st on R. KWK. 13 sts, needles 19R – 31R, remain in WP.

RC 100: Place 6 sts into HP on left for neck, bind off 1 st on R. KWK. 6 sts, needles 25R – 30R remain in WP.

RC 102: Place remaining 6 sts on the right side into HP. Cut yarn and place carriage on left side of bed.

Neck/raglan shaping, left side

Return 21 needles, from 32L – 12L, to WP. Reset RC to 96. Shape left neck and armhole to correspond, as follows:

RC 96: Bind off 1 st on L. KWK. 20 sts, needles 31L – 12L, remain in WP.

RC 98: Place 6 sts into HP on right for neck, bind off 1 st on L. KWK. 13 stitches, needles 30L – 18L remain in WP.

RC 100: Place 6 sts into HP on right for neck, bind off 1 st on L. KWK. 6 stitches, needles 29L – 24L remain in WP.

RC 102: Reset carriage levers to normal knitting (cancel hold.) Knit 1 row to the right over all 59 remaining stitches, needles 29L – 30R. Remove on waste yarn.

Front

There are 73 sts in work position, from 36L – 37R. End with carriage on right.

RC 90: Bind off 2 sts at the beginning of the next 2 rows. 30 sts, needles 34L – 35R remain in WP.

Neck/raglan shaping, right side

Place center 11 sts, plus all remaining stitches on the left side of garment into HP. (Needles 34L – 6R are in HP, and 29 needles, from 7R – 35R are in WP.)

Work on right side of neck and armhole only from this point onwards.

RC 92: Bind off 1 st on the R. KWK. 24 sts, needles 7R – 34R remain in WP.

RC 94: Place 5 more sts into HP on left for neck, bind off 1 sts on R. KWK. 22 sts, needles 12R – 33R remain in WP.

RC 96: Place 5 more sts into HP on left for neck, bind off 1 st on R. KWK. 16 sts, needles 17R – 32R, remain in WP.

RC 98: Place 5 more sts into HP on left for neck, bind off 1 st on R. KWK. 10 sts, needles 22R – 31R remain in WP.

RC 100: Place 5 more sts into HP on left for neck, bind off 1 st on R. KWK. 4 sts, needles 27R – 30R remain in WP.

RC 102: Place remaining 4 sts on the right side into HP. Cut yarn and place carriage on left side of bed.

Neck/raglan shaping, left side

Return 31 needles, from 36L – 6L, to WP.
Reset RC to 92. Shape left neck and armhole to correspond, as follows:

RC 92: Bind off 2 st on the L. KWK. 29 sts, needles 34L – 6L, remain in WP.

RC 94: Place 5 more sts into HP on right for neck, bind off 2 sts on L. KWK. 22 sts, needles 32L – 11L, remain in WP.

RC 96: Place 5 more sts into HP on right for neck, bind off 1 st on L. KWK. 16 sts, needles 31L – 16L, remain in WP.

RC 98: Place 5 more sts into HP on right for neck, bind off 1 st on L. KWK. 10 sts, needles 30L – 21L remain in WP.

RC 100: Place 5 more sts into HP on right for neck, bind off 1 st on L. KWK. 4 sts, needles 29L – 26L, remain in WP.

RC 102: Reset carriage levers to normal knitting (cancel hold.) Knit 1 row to the right over all 59 remaining stitches, needles 29L – 30R. Remove on waste yarn.

Sleeves

There are 59 sts in work position, from 29L – 30R. End with carriage on right.

RC 108: Bind off 2 sts at the beginning of the next 2 rows. 55 sts remain, from 27L – 28R.

RC 110: Bind off 1 st at the beginning of the next 2 rows. 53 sts remain, from 26L – 27R.

RC 112: Bind off 1 st at the beginning of the next 2 rows. 51 sts remain, from 25L – 26R.

RC 114: Bind off 1 st at the beginning of the next 2 rows. 49 sts remain, from 24L – 25R.

Neck/raglan shaping, right side

Place center 21 sts, plus all remaining stitches on the left side of garment into HP. (Needles 24L – 11R are in HP, and 14 needles, from 12R – 25R are in WP.)

Work on right side of neck and armhole only from this point onwards.

RC 116: Bind off 1 st on R. KWK. 13 sts, needles 12R – 24R, remain in WP.

RC 118: Place 6 sts into HP on left for neck, bind off 1 st on R. KWK. 6 sts, needles 18R – 23R, remain in WP.

RC 120: Place remaining 6 sts on the right side into HP. Cut yarn and place carriage on left side of bed.

Neck/raglan shaping, left side

Return 14 needles, from 24L – 11L, to WP.
Reset RC to 116. Shape left neck and armhole to correspond, as follows:

RC 116: Bind off 1 st on L. KWK. 13 sts, needles 23L – 11L, remain in WP.

RC 118: Place 6 sts into HP on right for neck, bind off 1 st on L. KWK. 16 stitches, needles 22L – 17L remain in WP.

RC 120: Reset carriage levers to normal knitting (cancel hold.) Knit 1 row to the right over all 45 remaining stitches, needles 22L – 23R. Remove on waste yarn.

Size 40

Back

There are 81 sts in work position, from 40L – 41R. End with carriage on right.

RC 90: Bind off 4 sts at the beginning of the next 2 rows. 73 sts remain, from 36L – 37R.

RC 92: Bind off 2 sts at the beginning of the next 2 rows. 71 sts remain, from 34L – 35R.

RC 94: Bind off 2 st at the beginning of the next 2 rows. 65 sts remain, from 32L – 33R.

Neck/raglan shaping, right side

Place center 23 sts, plus all remaining stitches on the left side of garment into HP. (Needles 32L – 12R are in HP, and 21 needles, from 13R – 33R are in WP.)

Work on right side of neck and armhole only from this point onwards.

RC 96: Bind off 1 st on R. KWK. 20 sts, needles 13R – 32R, remain in WP.

RC 98: Place 6 sts into HP on left for neck, bind off 1 st on R. KWK. 13 sts, needles 19R – 31R, remain in WP.

RC 100: Place 6 sts into HP on left for neck, bind off 1 st on R. KWK. 6 sts, needles 25R – 30R remain in WP.

RC 102: Place remaining 6 sts on the right side into HP. Cut yarn and place carriage on left side of bed.

Neck/raglan shaping, left side

Return 21 needles, from 32L – 12L, to WP. Reset RC to 96. Shape left neck and armhole to correspond, as follows:

RC 96: Bind off 1 st on L. KWK. 20 sts, needles 31L – 12L, remain in WP.

RC 98: Place 6 sts into HP on right for neck, bind off 1 st on L. KWK. 13 stitches, needles 30L – 18L remain in WP.

RC 100: Place 6 sts into HP on right for neck, bind off 1 st on L. KWK. 6 stitches, needles 29L – 24L remain in WP.

RC 102: Reset carriage levers to normal knitting (cancel hold.) Knit 1 row to the

right over all 59 remaining stitches, needles 29L – 30R. Remove on waste yarn.

Front

There are 81 sts in work position, from 40L – 41R. End with carriage on right.

RC 90: Bind off 4 sts at the beginning of the next 2 rows. 73sts remain, needles 36L – 37R remain in WP.

Neck/raglan shaping, right side

Place center 11 sts, plus all remaining stitches on the left side of garment into HP. (Needles 36L – 6R are in HP, and 31 needles, from 7R – 37R are in WP.)

Work on right side of neck and armhole only from this point onwards.

RC 92: Bind off 2 sts on the R. KWK. 29 sts, needles 7R – 35R remain in WP.

RC 94: Place 5 more sts into HP on left for neck, bind off 2 sts on R. KWK. 22 sts, needles 12R – 33R remain in WP.

RC 96: Place 5 more sts into HP on left for neck, bind off 1 st on R. KWK. 16 sts, needles 17R – 32R, remain in WP.

RC 98: Place 5 more sts into HP on left for neck, bind off 1 st on R. KWK. 10 sts, needles 22R – 31R remain in WP.

RC 100: Place 5 more sts into HP on left for neck, bind off 1 st on R. KWK. 4 sts, needles 27R – 30R remain in WP.

RC 102: Place remaining 4 sts on the right side into HP. Cut yarn and place carriage on left side of bed.

Neck/raglan shaping, left side

Return 31 needles, from 36L – 6L, to WP. Reset RC to 92. Shape left neck and armhole to correspond, as follows:

RC 92: Bind off 2 sts on the L. KWK. 29 sts, needles 34L – 6L remain in WP.

RC 94: Place 5 more sts into HP on right for neck, bind off 2 sts on L. KWK. 22 sts, needles 32L – 11L remain in WP.

RC 96: Place 5 more sts into HP on right for neck, bind off 1 st on L. KWK. 16 sts, needles 31L – 16L, remain in WP.

RC 98: Place 5 more sts into HP on right for neck, bind off 1 st on L. KWK. 10 sts, needles 30L – 21L remain in WP.

RC 100: Place 5 more sts into HP on right for neck, bind off 1 st on L. KWK. 4 sts, needles 29L – 26L remain in WP.

RC 102: Reset carriage levers to normal knitting (cancel hold.) Knit 1 row to the right over all 59 remaining stitches, needles 29L – 30R. Remove on waste yarn.

Sleeves

There are 67 sts in work position, from 33L – 34R. End with carriage on right.

RC 108: Bind off 4 sts at the beginning of the next 2 rows. 59 sts remain, from 29L – 30R.

RC 110: Bind off 2 sts at the beginning of the next 2 rows. 55 sts remain, from 27L – 28R.

RC 112: Bind off 2 sts at the beginning of the next 2 rows. 51 sts remain, from 25L – 26R.

RC 114: Bind off 1 st at the beginning of the next 2 rows. 49 sts remain, from 24L – 25R.

Neck/raglan shaping, right side

Place center 21 sts, plus all remaining stitches on the left side of garment into HP. (Needles 24L – 11R are in HP, and 14 needles, from 12R – 25R are in WP.)

Work on right side of neck and armhole only from this point onwards.

RC 116: Bind off 1 st on R. KWK. 13 sts, needles 12R – 24R, remain in WP.

RC 118: Place 6 sts into HP on left for neck, bind off 1 st on R. KWK. 6 sts, needles 18R – 23R, remain in WP.

RC 120: Place remaining 6 sts on the right side into HP. Cut yarn and place carriage on left side of bed.

Neck/raglan shaping, left side

Return 14 needles, from 24L – 11L, to WP.

Reset RC to 116. Shape left neck and armhole to correspond, as follows:

RC 116: Bind off 1 st on L. KWK. 13 sts, needles 23L – 11L, remain in WP.

RC 118: Place 6 sts into HP on right for neck, bind off 1 st on L. KWK. 6 stitches, needles 22L – 17L remain in WP.

RC 120: Reset carriage levers to normal knitting (cancel hold.) Knit 1 row to the right over all 45 remaining stitches, needles 22L – 23R. Remove on waste yarn.

Size 44

Back

There are 89 sts in work position, from 44L – 45R. End with carriage on right.

RC 90: Bind off 5 sts at the beginning of the next 2 rows. 79 sts remain, from 39L – 40R.

RC 92: Bind off 3 sts at the beginning of the next 2 rows. 73 sts remain, from 36L – 37R.

RC 94: Bind off 2 st at the beginning of the next 2 rows. 69 sts remain, from 34L – 35R.

RC 96: Bind off 2 sts at the beginning of the next 2 rows. 65 sts remain, from 32L – 33 R.

Neck/raglan shaping, right side

Place center 23 sts, plus all remaining stitches on the left side of garment into HP.

(Needles 32L – 12R are in HP, and 21 needles, from 13R – 33R are in WP.)

Work on right side of neck and armhole only from this point onwards.

RC 98: Bind off 1 st on R. KWK. 20 sts, needles 13R – 32R, remain in WP.

RC 100: Place 6 sts into HP on left for neck, bind off 1 st on R. KWK. 13 sts, needles 19R – 31R, remain in WP.

RC 102: Place 6 sts into HP on left for neck, bind off 1 st on R. KWK. 6 sts, needles 25R – 30R remain in WP.

RC 104: Place remaining 6 sts on the right side into HP. Cut yarn and place carriage on left side of bed.

Neck/raglan shaping, left side

Return 21 needles, from 32L – 12L, to WP. Reset RC to 98. Shape left neck and armhole to correspond, as follows:

RC 98: Bind off 1 st on L. KWK. 20 sts, needles 31L – 12L, remain in WP.

RC 100: Place 6 sts into HP on right for neck, bind off 1 st on L. KWK. 13 stitches, needles 30L – 18L remain in WP.

RC 102: Place 6 sts into HP on right for neck, bind off 1 st on L. KWK. 6 stitches, needles 29L – 24L remain in WP.

RC 104: Reset carriage levers to normal knitting (cancel hold.) Knit 1 row to the right over all 59 remaining stitches, needles 29L – 30R. Remove on waste yarn.

Front

There are 89 sts in work position, from 44L – 45R. End with carriage on right.

RC 90: Bind off 5 sts at the beginning of the next 2 rows. 79sts remain, needles 39L – 40R remain in WP.

RC 92: Bind off 3 sts at the beginning of the next 2 rows. 73 sts remain, from 36L – 37R.

Neck/raglan shaping, right side

Place center 11 sts, plus all remaining stitches on the left side of garment into HP.

(Needles 36L – 6R are in HP, and 31 needles, from 7R – 37R are in WP.)

Work on right side of neck and armhole only from this point onwards.

RC 94: Bind off 2 sts on the R. KWK. 29 sts, needles 7R – 35R remain in WP.

RC 96: Place 5 more sts into HP on left for neck, bind off 2 sts on R. KWK. 22 sts, needles 12R – 33R remain in WP.

RC 98: Place 5 more sts into HP on left for neck, bind off 1 st on R. KWK. 16 sts, needles 17R – 32R, remain in WP.

RC 100: Place 5 more sts into HP on left for neck, bind off 1 st on R. KWK. 10 sts, needles 22R – 31R remain in WP.

RC 102: Place 5 more sts into HP on left for neck, bind off 1 st on R. KWK. 4 sts, needles 27R – 30R remain in WP.

RC 104: Place remaining 4 sts on the right side into HP. Cut yarn and place carriage on left side of bed.

Neck/raglan shaping, left side

Return 31 needles, from 36L – 6L, to WP.
Reset RC to 94. Shape left neck and armhole to correspond, as follows:

RC 94: Bind off 2 sts on the L. KWK. 29 sts, needles 34L – 6L remain in WP.

RC 96: Place 5 more sts into HP on right for neck, bind off 2 sts on L. KWK. 22 sts, needles 32L – 11L remain in WP.

RC 98: Place 5 more sts into HP on right for neck, bind off 1 st on L. KWK. 16 sts, needles 31L – 16L, remain in WP.

RC 100: Place 5 more sts into HP on right for neck, bind off 1 st on L. KWK. 10 sts, needles 30L – 21L remain in WP.

RC 102: Place 5 more sts into HP on right for neck, bind off 1 st on L. KWK. 4 sts, needles 29L – 26L remain in WP.

RC 104: Reset carriage levers to normal knitting (cancel hold.) Knit 1 row to the right over all 59 remaining stitches, needles 29L – 30R. Remove on waste yarn.

Sleeves

There are 75 sts in work position, from 37L – 38R. End with carriage on right.

RC 108: Bind off 5 sts at the beginning of the next 2 rows. 65 sts remain, from 32L – 33R.

RC 110: Bind off 3 sts at the beginning of the next 2 rows. 59 sts remain, from 29L – 30R.

RC 112: Bind off 2 sts at the beginning of the next 2 rows. 55 sts remain, from 27L – 28R.

RC 114: Bind off 2 sts at the beginning of the next 2 rows. 51 sts remain, from 25L – 26R.

RC 116: Bind off 1 st at the beginning of the next 2 rows. 49 sts remain, from 24L – 25R.

Neck/raglan shaping, right side

Place center 21 sts, plus all remaining stitches on the left side of garment into HP.

(Needles 24L – 11R are in HP, and 14 needles, from 12R – 25R are in WP.)

Work on right side of neck and armhole only from this point onwards.

RC 118: Bind off 1 st on R. KWK. 13 sts, needles 12R – 24R, remain in WP.

RC 120: Place 6 sts into HP on left for neck, bind off 1 st on R. KWK. 6 sts, needles 18R – 23R, remain in WP.

RC 122: Place remaining 6 sts on the right side into HP. Cut yarn and place carriage on left side of bed.

Neck/raglan shaping, left side

Return 14 needles, from 24L – 11L, to WP.

Reset RC to 118. Shape left neck and armhole to correspond, as follows:

RC 118: Bind off 1 st on L. KWK. 13 sts, needles 23L – 11L, remain in WP.

RC 120: Place 6 sts into HP on right for neck, bind off 1 st on L. KWK. 6 stitches, needles 22L – 17L remain in WP.

RC 122: Reset carriage levers to normal knitting (cancel hold.) Knit 1 row to the right over all 45 remaining stitches, needles 22L – 23R. Remove on waste yarn.

Size 48

Back

There are 97 sts in work position, from 48L – 49R. End with carriage on right.

RC 90: Bind off 7 sts at the beginning of the next 2 rows. 83 sts remain, from 41L – 42R.

RC 92: Bind off 3 sts at the beginning of the next 2 rows. 77 sts remain, from 38L – 39R.

RC 94: Bind off 2 st at the beginning of the next 2 rows. 73 sts remain, from 36L – 37R.

RC 96: Bind off 2 sts at the beginning of the next 2 rows. 69 sts remain, from 34L – 35 R.

RC 98: Bind off 2 sts at the beginning of the next 2 rows. 65 sts remain, from 32L – 33R.

Neck/raglan shaping, right side

Place center 23 sts, plus all remaining stitches on the left side of garment into HP.

(Needles 32L – 12R are in HP, and 21 needles, from 13R – 33R are in WP.)

Work on right side of neck and armhole only from this point onwards.

RC 100: Bind off 1 st on R. KWK. 20 sts, needles 13R – 32R, remain in WP.

RC 102: Place 6 sts into HP on left for neck, bind off 1 st on R. KWK. 13 sts, needles 19R – 31R, remain in WP.

RC 104: Place 6 sts into HP on left for neck, bind off 1 st on R. KWK. 6 sts, needles 25R – 30R remain in WP.

RC 106: Place remaining 6 sts on the right side into HP. Cut yarn and place carriage on left side of bed.

Neck/raglan shaping, left side

Return 21 needles, from 32L – 12L, to WP.

Reset RC to 100. Shape left neck and armhole to correspond, as follows:

RC 100: Bind off 1 st on L. KWK. 20 sts, needles 31L – 12L, remain in WP.

RC 102: Place 6 sts into HP on right for neck, bind off 1 st on L. KWK. 13 stitches, needles 30L – 18L remain in WP.

RC 104: Place 6 sts into HP on right for neck, bind off 1 st on L. KWK. 6 stitches, needles 29L – 24L remain in WP.

RC 106: Reset carriage levers to normal knitting (cancel hold.) Knit 1 row to the right over all 59 remaining stitches, needles 29L – 30R. Remove on waste yarn.

Front

There are 97 sts in work position, from 48L – 49R. End with carriage on right.

RC 90: Bind off 7 sts at the beginning of the next 2 rows. 83 sts remain, needles 41L – 42R remain in WP.

RC 92: Bind off 3 sts at the beginning of the next 2 rows. 77 sts remain, from 38L – 39R.

RC 94: Bind off 2 sts at the beginning of the next 2 rows. 73 sts remain, from 36L – 37R.

Neck/raglan shaping, right side

Place center 11 sts, plus all remaining stitches on the left side of garment into HP.

(Needles 36L – 6R are in HP, and 31 needles, from 7R – 37R are in WP.)

Work on right side of neck and armhole only from this point onwards.

RC 96: Bind off 2 sts on the R. KWK. 29 sts, needles 7R – 35R remain in WP.

RC 98: Place 5 more sts into HP on left for neck, bind off 2 sts on R. KWK. 22 sts, needles 12R – 33R remain in WP.

RC 100: Place 5 more sts into HP on left for neck, bind off 1 st on R. KWK. 16 sts, needles 17R – 32R, remain in WP.

RC 102: Place 5 more sts into HP on left for neck, bind off 1 st on R. KWK. 10 sts, needles 22R – 31R remain in WP.

RC 104: Place 5 more sts into HP on left for neck, bind off 1 st on R. KWK. 4 sts, needles 27R – 30R remain in WP.

RC 106: Place remaining 4 sts on the right side into HP. Cut yarn and place carriage on left side of bed.

Neck/raglan shaping, left side

Return 31 needles, from 36L – 6L, to WP. Reset RC to 96. Shape left neck and armhole to correspond, as follows:

RC 96: Bind off 2 sts on the L. KWK. 29 sts, needles 34L – 6L remain in WP.

RC 98: Place 5 more sts into HP on right for neck, bind off 2 sts on L. KWK. 22 sts, needles 32L – 11L remain in WP.

RC 100: Place 5 more sts into HP on right for neck, bind off 1 st on L. KWK. 16 sts, needles 31L – 16L, remain in WP.

RC 102: Place 5 more sts into HP on right for neck, bind off 1 st on L. KWK. 10 sts, needles 30L – 21L remain in WP.

RC 104: Place 5 more sts into HP on right for neck, bind off 1 st on L. KWK. 4 sts, needles 29L – 26L remain in WP.

RC 106: Reset carriage levers to normal knitting (cancel hold.) Knit 1 row to the right over all 59 remaining stitches, needles 29L – 30R. Remove on waste yarn.

Sleeves

There are 83 sts in work position, from 41L – 42R. End with carriage on right.

RC 108: Bind off 7 sts at the beginning of the next 2 rows. 69 sts remain, from 34L – 35R.

RC 110: Bind off 3 sts at the beginning of the next 2 rows. 63sts remain, from 31L – 32R.

RC 112: Bind off 2 sts at the beginning of the next 2 rows. 59 sts remain, from 29L – 30R.

RC 114: Bind off 2 sts at the beginning of the next 2 rows. 55 sts remain, from 27L – 28R.

RC 116: Bind off 2 sts at the beginning of the next 2 rows. 51 sts remain, from 25L – 26R.

RC 118: Bind off 1 st at the beginning of the next 2 rows. 49 sts remain, from 24L – 25R.

Neck/raglan shaping, right side

Place center 21 sts, plus all remaining stitches on the left side of garment into HP. (Needles 24L – 11R are in HP, and 14 needles, from 12R – 25R are in WP.)

Work on right side of neck and armhole only from this point onwards.

RC 120: Bind off 1 st on R. KWK. 13 sts, needles 12R – 24R, remain in WP.

RC 122: Place 6 sts into HP on left for neck, bind off 1 st on R. KWK. 6 sts, needles 18R – 23R, remain in WP.

RC 124: Place remaining 6 sts on the right side into HP. Cut yarn and place carriage on left side of bed.

Neck/raglan shaping, left side

Return 14 needles, from 24L – 11L, to WP. Reset RC to 120. Shape left neck and armhole to correspond, as follows:

RC 120: Bind off 1 st on L. KWK. 13 sts, needles 23L – 11L, remain in WP.

RC 122: Place 6 sts into HP on right for neck, bind off 1 st on L. KWK. 6 stitches, needles 22L – 17L remain in WP.

RC 124: Reset carriage levers to normal knitting (cancel hold.) Knit 1 row to the right over all 45 remaining stitches, needles 22L – 23R. Remove on waste yarn.

Size 52

Back

There are 105 sts in work position, from 52L – 53R. End with carriage on right.

RC 90: Bind off 9 sts at the beginning of the next 2 rows. 87 sts remain, from 43L – 44R.

RC 92: Bind off 3 sts at the beginning of the next 2 rows. 81 sts remain, from 40L – 41R.

RC 94: Bind off 2 st at the beginning of the next 2 rows. 77 sts remain, from 38L – 39R.

RC 96: Bind off 2 sts at the beginning of the next 2 rows. 73 sts remain, from 36L – 37R.

RC 98: Bind off 2 sts at the beginning of the next 2 rows. 69 sts remain, from 34L – 35R.

RC 100: Bind off 1 st at the beginning of the next 2 rows. 67 sts remain, from 33L – 34R.

RC 102: Bind off 1 st at the beginning of the next 2 rows. 65 sts remain, from 32L – 33R.

Neck/raglan shaping, right side

Place center 23 sts, plus all remaining stitches on the left side of garment into HP. (Needles 32L – 12R are in HP, and 21 needles, from 13R – 33R are in WP.)

Work on right side of neck and armhole only from this point onwards.

RC 104: Bind off 1 st on R. KWK. 20 sts, needles 13R – 32R, remain in WP.

RC 106: Place 6 sts into HP on left for neck, bind off 1 st on R. KWK. 13 sts, needles 19R – 31R, remain in WP.

RC 108: Place 6 sts into HP on left for neck, bind off 1 st on R. KWK. 6 sts, needles 25R – 30R remain in WP.

RC 110: Place remaining 6 sts on the right side into HP. Cut yarn and place carriage on left side of bed.

Neck/raglan shaping, left side

Return 21 needles, from 32L – 12L, to WP. Reset RC to 104. Shape left neck and armhole to correspond, as follows:

RC 104: Bind off 1 st on L. KWK. 20 sts, needles 31L – 12L, remain in WP.

RC 106: Place 6 sts into HP on right for neck, bind off 1 st on L. KWK. 13 stitches, needles 30L – 18L remain in WP.

RC 108: Place 6 sts into HP on right for neck, bind off 1 st on L. KWK. 6 stitches, needles 29L – 24L remain in WP.

RC 110: Reset carriage levers to normal knitting (cancel hold.) Knit 1 row to the right over all 59 remaining stitches, needles 29L – 30R. Remove on waste yarn.

Front

There are 105 sts in work position, from 52L – 53R. End with carriage on right.

RC 90: Bind off 9 sts at the beginning of the next 2 rows. 87 sts remain, needles 43L – 44R remain in WP.

RC 92: Bind off 3 sts at the beginning of the next 2 rows. 81 sts remain, from 40L – 41R.

RC 94: Bind off 2 sts at the beginning of the next 2 rows. 77 sts remain, from 38L – 39R.

RC 96: Bind off 2 sts at the beginning of the next 2 rows. 73 sts remain, from 36L – 37R.

RC 98: bind off 2 sts at the beginning of the next 2 rows. 69 sts remain, from 34L – 35R.

Neck/raglan shaping, right side

Place center 11 sts, plus all remaining stitches on the left side of garment into HP. (Needles 34L – 6R are in HP, and 29 needles, from 7R – 35R are in WP.)

Work on right side of neck and armhole only from this point onwards.

RC 100: Bind off 1 st on R. KWK. 28 sts, needles 7R – 34R remain in WP.

RC 102: Place 5 more sts into HP on left for neck, bind off 1 st on R. KWK. 22 sts, needles 12R – 33R remain in WP.

RC 104: Place 5 more sts into HP on left for neck, bind off 1 st on R. KWK. 16 sts, needles 17R – 32R, remain in WP.

RC 106: Place 5 more sts into HP on left for neck, bind off 1 st on R. KWK. 10 sts, needles 22R – 31R remain in WP.

RC 108: Place 5 more sts into HP on left for neck, bind off 1 st on R. KWK. 4 sts, needles 27R – 30R remain in WP.

RC 110: Place remaining 4 sts on the right side into HP. Cut yarn and place carriage on left side of bed.

Neck/raglan shaping, left side

Return 29 needles, from 34L – 6L, to WP. Reset RC to 100. Shape left neck and armhole to correspond, as follows:

RC 100: Bind off 1 st on the L. KWK. 28 sts, needles 33L – 6L remain in WP.

RC 102: Place 5 more sts into HP on right for neck, bind off 1 st on L. KWK. 22 sts, needles 32L – 11L remain in WP.

RC 104: Place 5 more sts into HP on right for neck, bind off 1 st on L. KWK. 16 sts, needles 31L – 16L, remain in WP.

RC 106: Place 5 more sts into HP on right for neck, bind off 1 st on L. KWK. 10 sts, needles 30L – 21L remain in WP.

RC 108: Place 5 more sts into HP on right for neck, bind off 1 st on L. KWK. 4 sts, needles 29L – 26L remain in WP.

RC 110: Reset carriage levers to normal knitting (cancel hold.) Knit 1 row to the right over all 59 remaining stitches, needles 29L – 30R. Remove on waste yarn.

Sleeves

There are 91 sts in work position, from 45L – 46R. End with carriage on right.

RC 108: Bind off 9 sts at the beginning of the next 2 rows. 73 sts remain, from 36L – 37R.

RC 110: Bind off 3 sts at the beginning of the next 2 rows. 67 sts remain, from 33L – 34 R.

RC 112: Bind off 2 sts at the beginning of the next 2 rows. 63 sts remain, from 31L – 32R.

RC 114: Bind off 2 sts at the beginning of the next 2 rows. 59 sts remain, from 29L – 30R.

RC 116: Bind off 2 sts at the beginning of the next 2 rows. 55 sts remain, from 27L – 28R.

RC 118: Bind off 1 st at the beginning of the next 2 rows. 53 sts remain, from 26L – 27R.

RC 120: Bind off 1 st at the beginning of the next 2 rows. 51 sts remain, from 25L – 26R.

RC 122: Bind off 1 st at the beginning of the next 2 rows. 49 sts remain, from 24L – 25R.

Neck/raglan shaping, right side

Place center 21 sts, plus all remaining stitches on the left side of garment into HP. (Needles 24L – 11R are in HP, and 14 needles, from 12R – 25R are in WP.)

Work on right side of neck and armhole only from this point onwards.

RC 124: Bind off 1 st on R. KWK. 13 sts, needles 12R – 24R, remain in WP.

RC 126: Place 6 sts into HP on left for neck, bind off 1 st on R. KWK. 6 sts, needles 18R – 23R, remain in WP.

RC 128: Place remaining 6 sts on the right side into HP. Cut yarn and place carriage on left side of bed.

Neck/raglan shaping, left side

Return 14 needles, from 24L – 11L, to WP. Reset RC to 124. Shape left neck and armhole to correspond, as follows:

RC 124: Bind off 1 st on L. KWK. 13 sts, needles 23L – 11L, remain in WP.

RC 126: Place 6 sts into HP on right for neck, bind off 1 st on L. KWK. 6 stitches, needles 22L – 17L remain in WP.

RC 128: Reset carriage levers to normal knitting (cancel hold.) Knit 1 row to the right over all 45 remaining stitches, needles 22L – 23R. Remove on waste yarn.

Size 56

Back

There are 113 sts in work position, from 56L – 57R. End with carriage on right.

RC 90: Bind off 11 sts at the beginning of the next 2 rows. 91 sts remain, from 45L – 46R.

RC 92: Bind off 3 sts at the beginning of the next 2 rows. 85 sts remain, from 42L – 43R.

RC 94: Bind off 2 st at the beginning of the next 2 rows. 81 sts remain, from 40L – 41R.

RC 96: Bind off 2 sts at the beginning of the next 2 rows. 77 sts remain, from 38L – 39R.

RC 98: Bind off 2 sts at the beginning of the next 2 rows. 73 sts remain, from 36L – 37R.

RC 100: Bind off 1 st at the beginning of the next 2 rows. 71 sts remain, from 35L – 36R.

RC 102: Bind off 1 st at the beginning of the next 2 rows. 69 sts remain, from 34L – 35R.

RC 104: Bind off 1 st at the beginning of the next 2 rows. 67 sts remain, from 33L – 34R.

RC 106: Bind off 1 st at the beginning of the next 2 rows. 65 sts remain, from 32L – 33R.

Neck/raglan shaping, right side

Place center 23 sts, plus all remaining stitches on the left side of garment into HP. (Needles 32L – 12R are in HP, and 21 needles, from 13R – 33R are in WP.)

Work on right side of neck and armhole only from this point onwards.

RC 108: Bind off 1 st on R. KWK. 20 sts, needles 13R – 32R, remain in WP.

RC 110: Place 6 sts into HP on left for neck, bind off 1 st on R. KWK. 13 sts, needles 19R – 31R, remain in WP.

RC 112: Place 6 sts into HP on left for neck, bind off 1 st on R. KWK. 6 sts, needles 25R – 30R remain in WP.

RC 114: Place remaining 6 sts on the right side into HP. Cut yarn and place carriage on left side of bed.

Neck/raglan shaping, left side

Return 21 needles, from 32L – 12L, to WP.

Reset RC to 108. Shape left neck and armhole to correspond, as follows:

RC 108: Bind off 1 st on L. KWK. 20 sts, needles 31L – 12L, remain in WP.

RC 110: Place 6 sts into HP on right for neck, bind off 1 st on L. KWK. 13 stitches, needles 30L – 18L remain in WP.

RC 112: Place 6 sts into HP on right for neck, bind off 1 st on L. KWK. 6 stitches, needles 29L – 24L remain in WP.

RC 114: Reset carriage levers to normal knitting (cancel hold.) Knit 1 row to the right over all 59 remaining stitches, needles 29L – 30R. Remove on waste yarn.

Front

There are 113 sts in work position, from 56L – 57R. End with carriage on right.

RC 90: Bind off 11 sts at the beginning of the next 2 rows. 91 sts remain, from 45L – 46R.

RC 92: Bind off 3 sts at the beginning of the next 2 rows. 85 sts remain, from 42L – 43R.

RC 94: Bind off 2 st at the beginning of the next 2 rows. 81 sts remain, from 40L – 41R.

RC 96: Bind off 2 sts at the beginning of the next 2 rows. 77 sts remain, from 38L – 39R.

RC 98: Bind off 2 sts at the beginning of the next 2 rows. 73 sts remain, from 36L – 37R.

RC 100: Bind off 1 st at the beginning of the next 2 rows. 71 sts remain, from 35L – 36R.

RC 102: Bind off 1 st at the beginning of the next 2 rows. 69 sts remain, from 34L – 35R.

Neck/raglan shaping, right side

Place center 11 sts, plus all remaining stitches on the left side of garment into HP. (Needles 34L – 6R are in HP, and 29 needles, from 7R – 35R are in WP.)

Work on right side of neck and armhole only from this point onwards.

RC 104: Bind off 1 st on R. KWK. 28 sts, needles 7R – 34R remain in WP.
RC 106: Place 5 more sts into HP on left for neck, bind off 1 st on R. KWK. 22 sts, needles 12R – 33R remain in WP.
RC 108: Place 5 more sts into HP on left for neck, bind off 1 st on R. KWK. 16 sts, needles 17R – 32R, remain in WP.
RC 110: Place 5 more sts into HP on left for neck, bind off 1 st on R. KWK. 10 sts, needles 22R – 31R remain in WP.
RC 112: Place 5 more sts into HP on left for neck, bind off 1 st on R. KWK. 4 sts, needles 27R – 30R remain in WP.
RC 114: Place remaining 4 sts on the right side into HP. Cut yarn and place carriage on left side of bed.

Neck/raglan shaping, left side

Return 29 needles, from 34L – 6L, to WP. Reset RC to 104. Shape left neck and armhole to correspond, as follows:
RC 104: Bind off 1 st on the L. KWK. 28 sts, needles 33L – 6L remain in WP.
RC 106: Place 5 more sts into HP on right for neck, bind off 1 st on L. KWK. 22 sts, needles 32L – 11L remain in WP.
RC 108: Place 5 more sts into HP on right for neck, bind off 1 st on L. KWK. 16 sts, needles 31L – 16L, remain in WP.
RC 110: Place 5 more sts into HP on right for neck, bind off 1 st on L. KWK. 10 sts, needles 30L – 21L remain in WP.
RC 112: Place 5 more sts into HP on right for neck, bind off 1 st on L. KWK. 4 sts, needles 29L – 26L remain in WP.
RC 114: Reset carriage levers to normal knitting (cancel hold.) Knit 1 row to the right over all 59 remaining stitches, needles 29L – 30R. Remove on waste yarn.

Sleeves

There are 99 sts in work position, from 49L – 50R. End with carriage on right.

RC 108: Bind off 11 sts at the beginning of the next 2 rows. 77 sts remain, from 38L – 39R.
RC 110: Bind off 3 sts at the beginning of the next 2 rows. 71 sts remain, from 35L – 36 R.
RC 112: Bind off 2 sts at the beginning of the next 2 rows. 67 sts remain, from 33L – 34R.
RC 114: Bind off 2 sts at the beginning of the next 2 rows. 63 sts remain, from 31L – 32R.
RC 116: Bind off 2 sts at the beginning of the next 2 rows. 59 sts remain, from 29L – 30R.
RC 118: Bind off 1 st at the beginning of the next 2 rows. 57 sts remain, from 28L – 29R.
RC 120: Bind off 1 st at the beginning of the next 2 rows. 55 sts remain, from 27L – 28R.
RC 122: Bind off 1 st at the beginning of the next 2 rows. 53sts remain, from 26L – 27R.
RC 124: Bind off 1 st at the beginning of the next 2 rows. 51 sts remain, from 25L – 26R.
RC 126: Bind off 1 st at the beginning of the next 2 rows. 49 sts remain, from 24L – 25R.

Neck/raglan shaping, right side

Place center 21 sts, plus all remaining stitches on the left side of garment into HP. (Needles 24L – 11R are in HP, and 14 needles, from 12R – 25R are in WP.) Work on right side of neck and armhole only from this point onwards.
RC 128: Bind off 1 st on R. KWK. 13 sts, needles 12R – 24R, remain in WP.
RC 130: Place 6 sts into HP on left for neck, bind off 1 st on R. KWK. 6 sts, needles 18R – 23R, remain in WP.
RC 132: Place remaining 6 sts on the right side into HP. Cut yarn and place carriage on left side of bed.

Neck/raglan shaping, left side

Return 14 needles, from 24L – 11L, to WP. Reset RC to 128. Shape left neck and armhole to correspond, as follows:

RC 128: Bind off 1 st on L. KWK. 13 sts, needles 23L – 11L, remain in WP.

RC 130: Place 6 sts into HP on right for neck, bind off 1 st on L. KWK. 6 stitches, needles 22L – 17L remain in WP.

RC 132: Reset carriage levers to normal knitting (cancel hold.) Knit 1 row to the right over all 45 remaining stitches, needles 22L – 23R. Remove on waste yarn.