

Ladies 2-Piece Round Yoke Pullover

Suitable for any standard gauge knitting machine

Sizes S-M-L-XL-XXL, Finished Width 36 (40-44-48-52) inches; 92 (102-112-122-132) cm

This garment is an introduction to knitting Fairisle round neck pullovers. It is designed very simply, but does have short row shaping on the front to lower the neck a little, making it more comfortable to wear and to eliminate the bulge that often occurs at the bottom of the yoke.



Materials

Lightweight yarn, such as sock, fingering, or 4-ply, that will knit to correct gauge. Sample is knitted using two colors, and requires approximately 14-18 oz main color and 3 oz contrast

Gauge: 28 sts, 40 rows = 10 cm, or
7 sts, 10 rows = 1 inch in stockinet
(8.5 rows in Fairisle)

Tension: 8 in stockinet, or whatever is necessary to obtain gauge. Fairisle tension 9, or 1 number higher than for stockinet. It is more important to match stitch gauge; add or subtract a few rows to obtain correct length if necessary

The yoke on this pullover is made in two identical sections. Since this pattern is meant to be an introduction to Fairisle yokes, there are just two colors in the yoke. The contrast color is removed after knitting through each tier, but the yarn is not cut; adding the contrast color back into the carriage when beginning the next tier eliminates yarn tails, and makes it much easier to sew and finish the yoke. You may, however, add more colors if you prefer; an ounce of each additional color is more than enough.

Tier 1 in this pattern is wider than that found in many round yoke patterns, to provide more room in the upper arm and shoulders. The narrower tiers, 2 through 4, then pull the yoke in more from the top of the arm to the neck edge.

Abbreviations

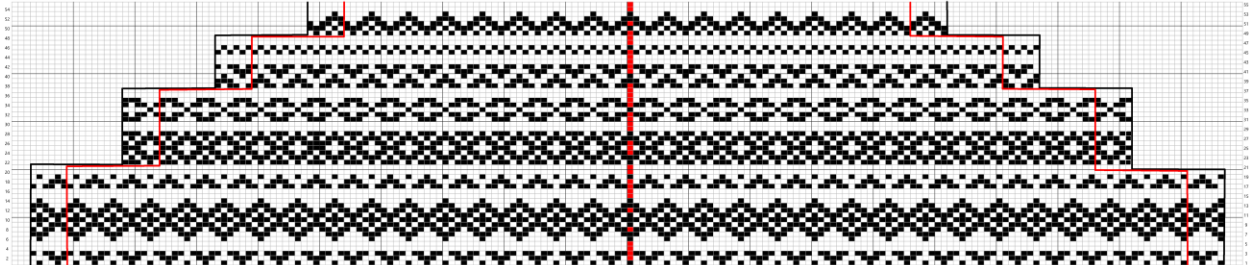
L left
R right
st(s) stitch(es)

RC row counter
Inc increase
Dec decrease
T number on the stitch dial

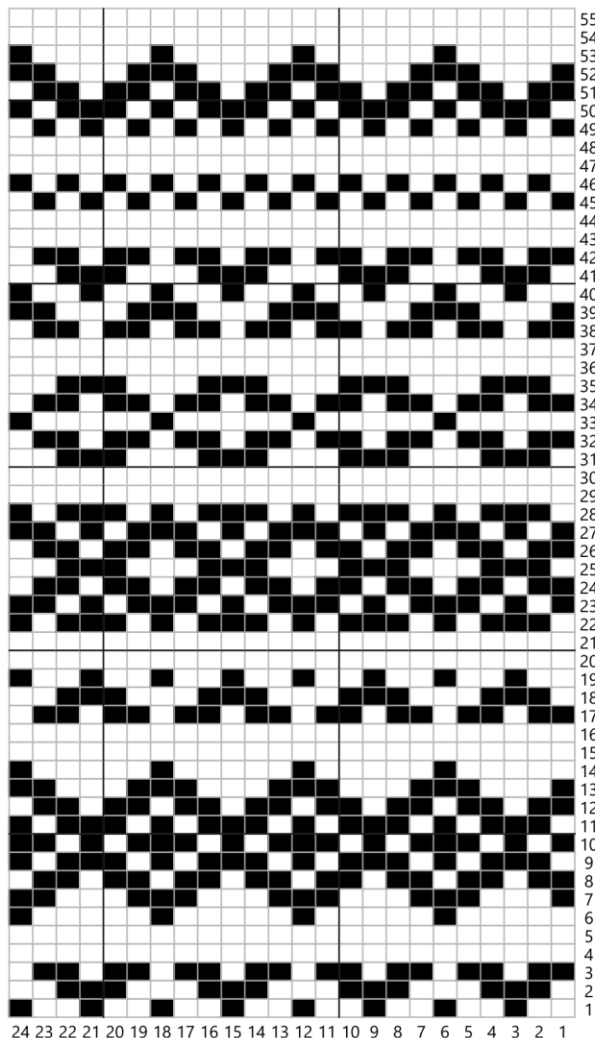
Complete Yoke Chart

This is the complete yoke chart. It shows how each tier begins and ends and should help visualize needle selection for each row. The red center line indicates needle 1 right of center 0.

NOTE: the black squares indicate the contrast color stitches.



The red inner lines show the beginning and end of each tier for sizes S and M. Sizes L-XL-XXL are the wider size, indicated by black outlines.



This is the 24-stitch punchcard diagram. Every tier is a 6-stitch repeat; when using an electronic machine, it is only necessary to mark the mylar or input the first 6 columns on the left side.

After knitting through the Fairisle pattern in each tier, knit 1 plain row, transfer the decrease stitches, and knit 1 plain row. Lock card on first pattern row of next tier, then remove yoke on waste yarn, circular needle, or garter bar.

Bring required needles for next tier into work position and rehang the yoke.

Reprogram machine before beginning the next tier. Studio/Singer/Silver Reed machines have drums on the back of the carriage that automatically reprogram when the carriage is locked on the first row of pattern stitches.

Brother/Knitking/Jones machines, free pass carriage to opposite side, set KC knob, and free pass back to original side.

Yoke

First number is stitch count for sizes S and M; second number is the stitch count for L-XL-XXL.

Set Up

Cast on 182 (194) stitches, from 91L-91R (97L to 97R) of center 0, with waste yarn and ravel cord.

T 8. Change to main color. Knit 2 rows, ending with carriage on right side of bed. Fasten a yarn marker on the strand of yarn between needle 1 left and needle 1 right to mark center of yoke.

Tier 1

T 9. Main color in feeder 1, contrast in feeder 2. Work Fairisle pattern for 19 rows, ending with carriage on left. Remove contrast yarn; do not cut it, just hold it out of the way.

Knit 1 row main color. (this is an unpunched row on the card, and the carriage will only knit main color on this row. Carriage is now on right.

Decrease row

Sizes S-M: -30 sts; bring forward every 6th needle 14 times, then every 5th needle 3 times, then every 6th needle 13 times.

Sizes L-XL-XXL: -30 sts; bring forward every 7th needle 4 times, every 6th needle 22 times, then every 7th needle 4 times.

Transfer the stitches on the extended needles to a neighboring needle and take the emptied needles back to position A (out of work). Knit 1 row main color, ending with carriage on left. Lock punchcard on first row of next tier. Remove yoke on waste yarn, circular needle, or garter bar.

Return the emptied needles to work position, then take 15 needles on each edge back to position A.

Sizes S-M: 152 needles remain, from 76 L to 76 R of center 0.

Sizes L-XL-XXL: 164 needles remain, from 82 L to 82 R of center 0.

Tier 2

Place carriage on left. Rehang yoke. Reprogram machine for first row of next tier and unlock card. Replace contrast yarn in feeder 2. Work Fairisle pattern for 14 rows, ending with carriage on left. Remove contrast yarn; do not cut it, just hold it out of the way.

Knit 1 row main color. Carriage is now on right.

Decrease row

Sizes S-M: -24 sts; bring forward every 7th needle 1 time, then every 6th needle 22 times, then every 7th needle 1 time.

Sizes L-XL-XXL: -30 sts; bring forward every 6th needle 5 times, every 5th needle 21 times, then every 6th needle 4 times.

Transfer the stitches on the extended needles to a neighboring needle and take the emptied needles back to position A (out of work). Knit 1 row main color, ending with carriage on left.

Lock punchcard on first row of next tier. Remove yoke on waste yarn, circular needle, or garter bar.

Return the emptied needles to work position, then take 12 (15) needles on each edge back to position A.

Sizes S-M: 128 needles remain, from 64 L to 64 R of center 0.

Sizes L-XL-XXL: 134 needles remain, from 67 L to 67 R of center 0.

Tier 3

Place carriage on left. Rehang yoke. Reprogram machine for first row of next tier and unlock card. Replace contrast yarn in feeder 2. Work Fairisle pattern for 9 rows, ending with carriage on right. Remove contrast yarn; do not cut it, just hold it out of the way.

Knit 1 row main color. Carriage is now on left.

Decrease row

Sizes S-M: -36 sts; bring forward every 4th needle 9 times, every 3rd needle 19 times, then every 4th needle 8 times.

Sizes L-XL-XXL: -30 sts; bring forward every 5th needle 5 times, every 4th needle 20 times, then every 5th needle 5 times.

Transfer the stitches on the extended needles to a neighboring needle and take the emptied needles back to position A (out of work). Knit 1 row main color, ending with carriage on right. Lock punchcard on first row of next tier. Remove yoke on waste yarn, circular needle, or garter bar.

Return the emptied needles to work position, then take 18 (15) needles on each edge back to position A.

Sizes S-M: 92 needles remain, from 46 L to 46 R of center 0.

Sizes L-XL-XXL: 104 needles remain, from 52 L to 52 R of center 0.

Tier 4

Place carriage on right. Rehang yoke. Reprogram machine for first row of next tier and unlock card. Replace contrast yarn in feeder 2. Work Fairisle pattern for 5 rows, ending with carriage on left. All Fairisle has now been completed for yoke; cut contrast yarn.

Knit 1 row main color. Carriage is now on right.

Decrease row

Sizes S: -26 sts; bring forward every 4th needle 5 times, then every 3rd needle 15 times, then every 4th needle 6 times. 66 needles remain, from 33 L to 33 R of center 0.

Sizes M: -22 sts; bring forward every 4th needle 22 times. 70 needles remain, from 35 L to 35 R of center 0.

Sizes L: -30 sts; bring forward every 4th needle 6 times, every 3rd needle 19 times, then every 4th needle 5 times. 74 needles remain, from 37 L to 37 R of center 0.

Sizes XL: -26 sts; bring forward every 4th needle 12 times, every 3rd needle 3 times, then every 4th needle 11 times. 78 needles remain, from 39 L to 39 R of center 0.

Sizes XXL: -20 sts; bring forward every 5th needle 20 times. 84 needles remain, from 42 L to 42 R of center 0.

Transfer the stitches on the extended needles to a neighboring needle and take the emptied needles back to position A (out of work). Knit 1 row main color, ending with carriage on left; remove yoke on waste yarn.

This completes the yoke. Make another the same. Block both sections at this point to make it easier to seam. Sew one seam; mattress stitch is suggested.

Neckband

With seam at center 0, rehang top edge of yoke on 130 (138-146-154-166) needles, picking up every stitch held by waste yarn. The needle on each side of center 0 will have 2 stitches – the yoke stitch, plus the seam allowance stitch. Seam allowance stitches are “live” and will run if not secured. Knit 1 row at T8, then change to ribbing and T 6. Knit 20 rows. Bind off loosely.

Sew remaining seam. Turn neckband down to inside and sew in place, taking care to allow enough ease so that neckband will go easily over the head.

Body and Sleeves Sizes S and M

Note: Back/front/sleeves are picked up from the cast on edge of the yoke and worked downwards. Because of the way knitting stitches are formed, there is one less stitch when knitting downwards. 2 more stitches are used for seams, leaving 3 fewer stitches along the bottom edge of each yoke section. Yoke seams are on the shoulders. The yoke is the same for both sizes, but the number of rows and increases for raglan shaping are different.

Special abbreviation: KWK = have carriage set to holding position. Bring required number of stitches opposite carriage into hold position, knit across, wrap yarn under first holding needle, knit back to original side.

Sizes S and M

Finished width at underarm 36 (40) inches 92 (102) cm

Back

Hold bottom edge of yoke with knit side toward the machine, purl side facing you. Begin with the yarn marker on the bottom of the yoke. Place this stitch on needle 1 right of center 0, then pick up the required stitches on each side, a total of 111 stitches, from 55 L to 56 R.

T 8. Begin with carriage on the right.

RC 000. Increase 1 stitch both sides with the 2-prong transfer tool. Knit across and back to the right.

Continue to increase 1 stitch both sides every other row a total of 6 (9) more times, ending on RC 14 (20) with 125 (131) sts.

Cast on 2 (5) stitches at the beginning of the next 2 rows. 129 (141) stitches

Reset RC to 000. Knit even to RC 140 (146). Lengthen or shorten here if desired, and make a note of the number of rows.

Change to ribbing. T 6. Knit 20 rows. Turn stitch dial up as far as it will go and knit 1 row. Bind off, using stitch through stitch method.

Front

Front is shaped with short rows. This lowers the neck and makes it more comfortable to wear. It also eliminates the pouch or “shelf” that often develops when ladies, especially, wear a round yoke pullover that does not have short row shaping. However, beginners may prefer to omit the short rows, and simply knit another Back section instead. Many traditional hand knit patterns do not include short row shaping, so this is an acceptable option.

Hold bottom edge of yoke with knit side toward the machine, purl side facing you. Begin with the yarn marker on the bottom of the yoke. Place this stitch on needle 1 right of center 0, then pick up the required stitches on each side, a total of 111 stitches, from 55 L to 56 R.

T 8. Begin with the carriage on the left. Place all 111 stitches into hold position and set the carriage to hold.

Raglan And Short Row Shaping

All Sizes

RC 000: Return first 4 stitches to work. Increase 1 stitch on left side with the 2-prong transfer tool. Knit to the right, wrap first holding needle, knit back to left. (KWK) 5 sts in work on left.

RC 2: Return next 4 sts to work, inc 1 st on left. KWK. 10 sts are now in work on left.

RC 4: Return next 4 sts to work, inc 1 st on left. KWK. 15 sts are now in work on left.

RC 6: Return next 4 sts to work, inc 1 st on left. KWK. 20 sts are now in work on left.

RC 8: Return next 5 sts to work, inc 1 st on left. KWK. 26 sts are now in work on left.

RC 10: Return next 5 sts to work, inc 1 st on left. KWK. 32 sts are now in work on left.

RC 12: Return next 5 sts to work, inc 1 st on left. KWK. 38 sts are now in work on left

This completes the left short row shaping for size S.

Cut yarn and put all stitches back into hold position.

For size M only

RC 14: Return next 5 sts to work, inc 1 st on left. KWK. 44 sts are now in work on left.

RC 16: Return next 5 sts to work, inc 1 st on left. KWK. 50 sts are now in work on left.

This completes the left short row shaping for size M.

Cut yarn and put all stitches back into hold position.

Place carriage on right side of needle bed.

RC 000. Return first 4 stitches to work. Increase 1 stitch on left side with the 2-prong transfer tool. Knit to the left, wrap first hold needle, knit back to right. (KWK) 5 sts in work on right.

RC 2. Return next 4 sts to work, inc 1 st on right. KWK. 10 sts are now in work on right.

RC 4. Return next 4 sts to work, inc 1 st on right. KWK. 15 sts are now in work on right.

RC 6. Return next 4 sts to work, inc 1 st on right. KWK. 20 sts are now in work on right.

RC 8. Return next 5 sts to work, inc 1 st on right. KWK. 26 sts, are now in work on right.

RC 10: Return next 5 sts to work, inc 1 st on right. KWK. 32 sts are now in work on right.

RC 12: Return next 5 sts to work, inc 1 st on right. KWK. 38 sts are now in work on right

RC 14. This completes the right raglan shaping and short row shaping for size S. 125 stitches, from 62 L to 63 R of center 0.

Set carriage for normal knitting (cancel hold setting.) Cast on 2 stitches at the beginning of the next 2 rows. Go to Lower Body instructions. 129 stitches.

For size M only

RC 14: Return next 5 sts to work, inc 1 st on right. KWK. 44 sts are now in work on right.

RC 16: Return next 5 sts to work, inc 1 st on right. KWK. 50 sts are now in work on right.

RC 18. This completes the right short row shaping for size M. 129 sts, from 64 L to 65 R of center 0.

Set carriage for normal knitting (cancel hold setting.)

RC 18: Using the transfer tool, increase 1 stitch both sides, knit across and back to the right.

This completes the raglan shaping. 131 stitches

Cast on 5 stitches at the beginning of the next 2 rows. Go to Lower Body instructions. 141 stitches.

Lower Body

RC 000. Knit even to RC 140 (146). Lengthen or shorten here if desired and make a note of the number of rows.

Change to ribbing. T 6. Knit 20 rows. Turn stitch dial up as far as it will go and knit 1 row. Bind off, using stitch through stitch method.

Sleeves (make 2 alike)

Hold bottom edge of yoke with knit side toward the machine, purl side facing you. Pick up 68 stitches, from 34L to 34R. This should be every remaining stitch that is held by waste yarn and ravel cord between the back and front body sections. ***Shoulder seam goes at center 0.*** Thread carriage with main color and fasten a clip on the end to hold it down out of the way.

T 8. Begin with the carriage on the right.

RC 000. Increase 1 stitch both sides with the 2-prong transfer tool. Knit across and back to the right.

Continue to increase 1 stitch both sides every other row a total of 6 (9) more times, ending on RC 14 (20) with 82 (88) sts.

Cast on 2 (5) stitches at the beginning of the next 2 rows. 86 (98) stitches

Lower Sleeve

Side seam is 17.5 (18) inches (44.5 – 46 cm) long. Add or subtract length here, if desired.

RC 000.

Size S: Knit even to RC 17. Decrease 1 stitch both sides on this and every following 17th row a total of 6 times, then 1 stitch both sides every 16 rows 2 times. 70 stitches remain. Knit

even to RC 150. Bring forward every 7th needle 9 times; transfer these stitches to neighboring needles. Remove on waste yarn and rehang on 61 needles; knit 1 row. Go to Cuff.

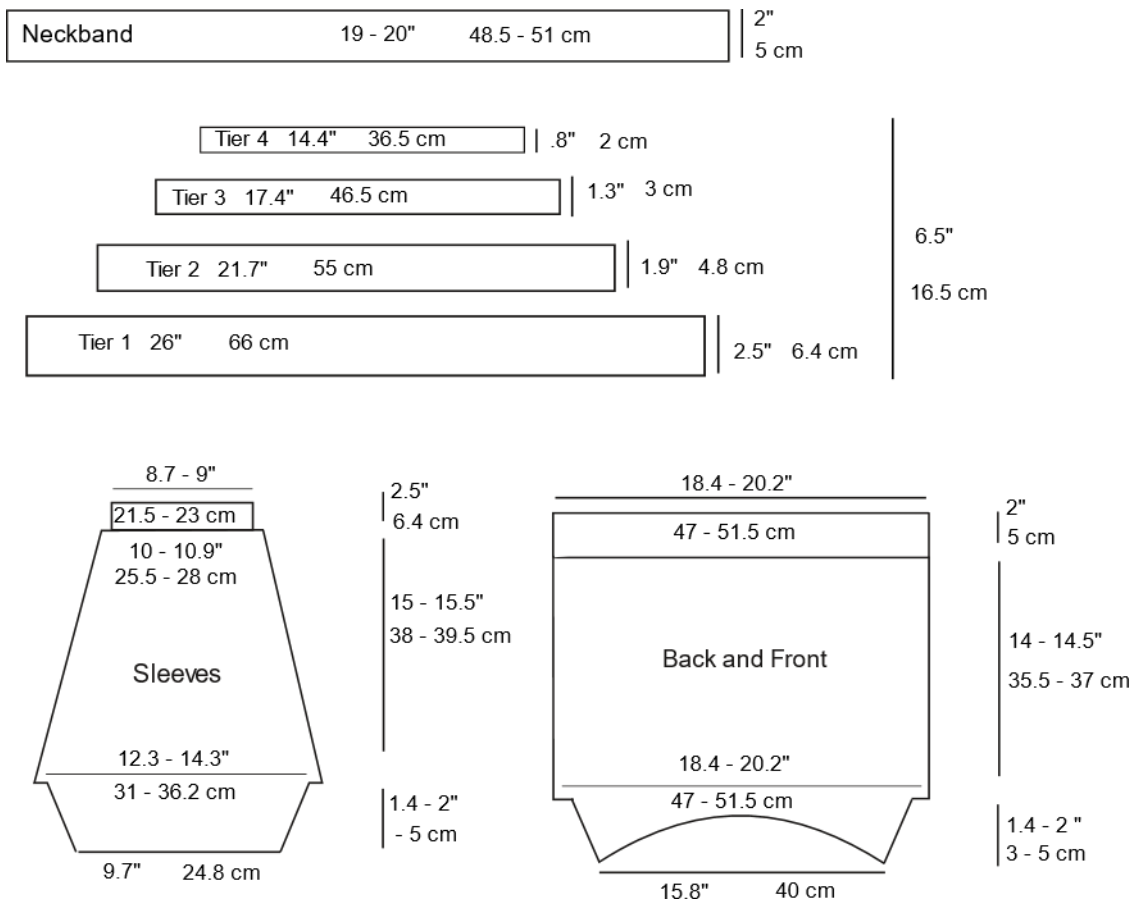
Size M: Knit even to RC 12. Decrease 1 stitch both sides on this and every following 12th row a total of 12 times. 74 stitches remain. Knit even to RC 156. Bring forward the 7th needle 1 time, every 6th needle 9 time, then the 7th needle 1 time; transfer these stitches to neighboring needles. Remove on waste yarn and rehang on 63 needles; knit 1 row. Go to Cuff.

Cuff

Change to ribbing. T 6. Knit 25 rows. Turn stitch dial up as far as it will go and knit 1 row. Bind off, using stitch through stitch method.

Finishing

Sew side and sleeve seams, work in yarn ends. Block if desired.



Body and Sleeves Sizes L-XL-XXL

Finished width at underarm 44 (48-52) inches 112 (122-132) cm

Note: Back/front/sleeves are picked up from the cast on edge of the yoke and worked downwards. Because of the way knitting stitches are formed, there is one less stitch when knitting downwards. 2 more stitches are used for seams, leaving 3 fewer stitches along the bottom edge of each yoke section. Yoke seams are on the shoulders. The yoke is the same for both sizes, but the number of rows and increases for raglan shaping are different.

Special abbreviation: KWK = have carriage set to holding position. Bring required number of stitches opposite carriage into hold position, knit across, wrap yarn under first holding needle, knit back to original side.

Back

Hold bottom edge of yoke with knit side toward the machine, purl side facing you. Begin with the yarn marker on the bottom of the yoke. Place this stitch on needle 1 right of center 0, then pick up the required stitches on each side, a total of 119 stitches, from 59 L to 60 R.

RC 000. Increase 1 stitch both sides with the 2-prong transfer tool. Knit across and back to the right.

Continue to increase 1 stitch both sides every other row a total of 11 (15-20) more times, ending on RC 24 (32-42) with 143 (151-161) sts.

Cast on 7 (9-11) stitches at the beginning of the next 2 rows. 157 (169-183) stitches

Reset RC to 000. Knit even to RC 150. Lengthen or shorten here if desired, and make a note of the number of rows.

Change to ribbing. T 6. Knit 20 rows. Turn stitch dial up as far as it will go and knit 1 row. Bind off, using stitch through stitch method.

Front

Front is shaped with short rows. This lowers the neck and makes it more comfortable to wear. It also eliminates the pouch or “shelf” that often develops when ladies, especially, wear a pullover that does not have short row shaping. However, beginners may prefer to omit the short rows, and simply knit another Back section instead. Many traditional hand knit patterns do not include short row shaping, so this is an acceptable option.

Hold bottom edge of yoke with knit side toward the machine, purl side facing you. Begin with the yarn marker on the bottom of the yoke. Place this stitch on needle 1 right of center 0, then pick up the required stitches on each side, a total of 119 stitches, from 59 L to 60 R.

T 8. Begin with the carriage on the left. Place all 119 stitches into hold position and set the carriage to hold.

Raglan And Short Row Shaping

All Sizes

RC 000: Return first 3 stitches to work. Increase 1 stitch on left side with the 2-prong transfer tool. Knit to the right, wrap first holding needle, knit back to left. (KWK) 4 sts in work on left.

RC 2: Return next 3 sts to work, inc 1 st on left. KWK. 8 sts in work on left.

RC 4: Return next 3 sts to work, inc 1 st on left. KWK. 12 sts are now in work on left.

RC 6: Return next 3 sts to work, inc 1 st on left. KWK. 16 sts are now in work on left.

RC 8: Return next 4 sts to work, inc 1 st on left. KWK. 21 sts are now in work on left.

RC 10: Return next 4 sts to work, inc 1 st on left. KWK. 26 sts are now in work on left.

RC 12: Return next 4 sts to work, inc 1 st on left. KWK. 31 sts are now in work on left.

RC 14: Return next 4 sts to work, inc 1 st on left. KWK. 36 sts are now in work on left.

RC 16: Return next 5 sts to work, inc 1 st on left. KWK. 42 sts are now in work on left.

RC 18: Return next 5 sts to work, inc 1 st on left. KWK. 48 sts are now in work on left.

RC 20: Return next 5 sts to work, inc 1 st on left. KWK. 54 sts are now in work on left, from 70 L to 17 L of center 0.

This completes the left short row shaping.

Cut yarn and put all stitches back into hold position.

Place carriage on right side of needle bed.

Reset RC to 000: Return first 3 stitches to work. Increase 1 stitch on right side with the 2-prong transfer tool. Knit to the left, wrap first holding needle, knit back to right. (KWK) 4 sts in work on right.

RC 2: Return next 3 sts to work, inc 1 st on right. KWK. 8 sts in work on right.

RC 4: Return next 3 sts to work, inc 1 st on right. KWK. 12 sts are now in work on right.

RC 6: Return next 3 sts to work, inc 1 st on right. KWK. 16 sts are now in work on right.

RC 8: Return next 4 sts to work, inc 1 st on right. KWK. 21 sts are now in work on right.

RC 10: Return next 4 sts to work, inc 1 st on right. KWK. 26 sts are now in work on right.

RC 12: Return next 4 sts to work, inc 1 st on right. KWK. 31 sts are now in work on right.

RC 14: Return next 4 sts to work, inc 1 st on right. KWK. 36 sts are now in work on right.

RC 16: Return next 5 sts to work, inc 1 st on right. KWK. 42 sts are now in work on right.

RC 18: Return next 5 sts to work, inc 1 st on right. KWK. 48 sts are now in work on right.

RC 20: Return next 5 sts to work, inc 1 st on right. KWK. 54 sts are now in work on right, from 18 L to 71 R of center 0.

RC 22. This completes the short row shaping. There are 141 stitches, from 70 L to 71 R.

Set carriage for normal knitting (cancel hold setting.) Continue to increase with the transfer tool, 1 stitch both sides every other row 1 (5-10) more times. ending on RC 24 (32-42) with 143 (151-161) sts.

Cast on 7 (9-11) stitches at the beginning of the next 2 rows. 157 (169-183) stitches

Reset RC to 000. Knit even to RC 150. Lengthen or shorten here if desired, and make a note of the number of rows.

Change to ribbing. T 6. Knit 20 rows. Turn stitch dial up as far as it will go and knit 1 row. Bind off, using stitch through stitch method.

Sleeves (make 2 alike)

Hold bottom edge of yoke with knit side toward the machine, purl side facing you. Pick up 72 stitches, from 36L to 36R. This should be every remaining stitch that is held by waste yarn and ravel cord between the back and front body sections. ***Shoulder seam goes at center 0.*** Thread carriage with main color and fasten a clip on the end to hold it down out of the way.

T 8. Begin with the carriage on the right.

RC 000. Increase 1 stitch both sides with the 2-prong transfer tool. Knit across and back to the right.

Continue to increase 1 stitch both sides every other row a total of 11 (15-20) more times, ending on RC 24 (32-42) with 96 (104-114) sts.

Cast on 7 (9-11) stitches at the beginning of the next 2 rows. 110 (122-136) stitches

Lower Sleeve

Seam is 18.5 inches (47 cm) long. Add or subtract length here, if desired.

RC 000.

Size L: Knit even to RC 10. Decrease 1 stitch both sides on this and every following 10th row a total of 15 times. 80 stitches remain. Knit even to RC 160. Bring forward every 6th needle 5 times, every 5th needle 3 times, then every 6th needle 5 times; transfer these stitches to neighboring needles. Remove on waste yarn and rehang on 67 needles; knit 1 row. Go to Cuff instructions.

Size XL: Knit even to RC 8. Decrease 1 stitch both sides on this and every following 8th row a total of 19 times. 84 stitches remain. Knit even to RC 160. Bring forward every 6th needle 13 times; transfer these stitches to neighboring needles. Remove on waste yarn and rehang on 71 needles; knit 1 row. Go to Cuff instructions.

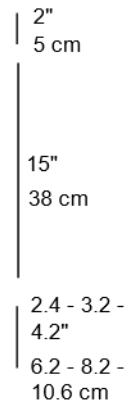
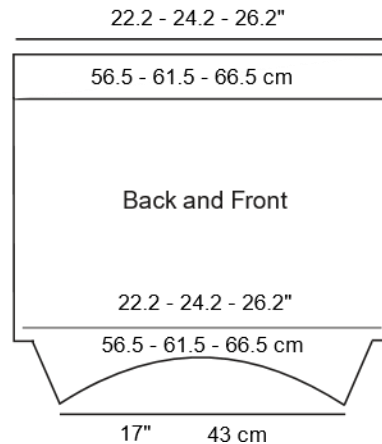
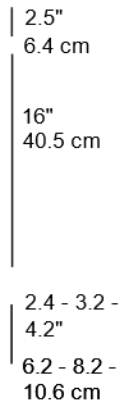
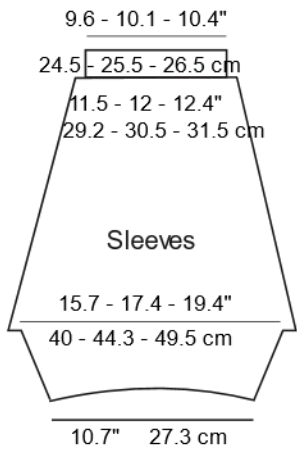
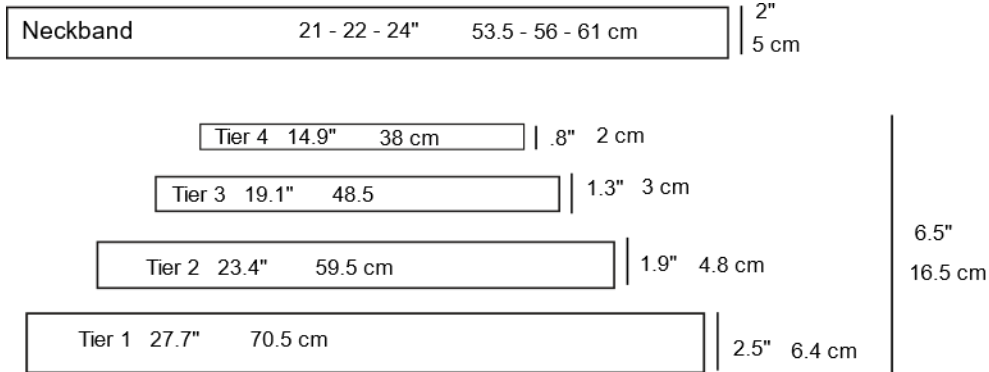
Size XXL: Knit even to RC 7. Decrease 1 stitch both sides on this and every following 7th row a total of 4 times, then 1 stitch both sides every 6th row 21 times. 86 stitches remain. Knit even to RC 160. Bring forward every 7th needle 1 time, every 6th needle 11 times, then the 7th needle 1 time; transfer these stitches to neighboring needles. Remove on waste yarn and rehang on 73 needles; knit 1 row. Go to Cuff instructions.

Cuff

Change to ribbing. T 6. Knit 25 rows. Turn stitch dial up as far as it will go and knit 1 row. Bind off, using stitch through stitch method.

Finishing

Sew side and sleeve seams, work in yarn ends. Block if desired.



For more experienced knitters, the garment fits better if a few short rows are included at the top of the Back and Sleeves. Optional detailed instructions for Back and Sleeve short row shaping begins on next page.

Optional Back Raglan and Short Row Shaping

Sizes S and M

Hold bottom edge of yoke with knit side toward the machine, purl side facing you. Begin with the yarn marker on the bottom of the yoke. Place this stitch on needle 1 right of center 0, then pick up the required stitches on each side, a total of 111 stitches, from 55 L to 56 R.

T 8. Begin with the carriage on the left. Place all 111 stitches into hold position and set the carriage to hold.

Work left side of neck and raglan as follows:

RC 000: Return first 6 stitches to work. Increase 1 stitch on left side with the 2-prong transfer tool. Knit to the right, wrap first holding needle, knit back to left. (KWK) 7 sts in work on left.

RC 2: Return next 6 sts to work, inc 1 st on left. KWK. 14 sts in work on left.

RC 4: Return next 6 sts to work, inc 1 st on left. KWK. 21 sts in work on left.

RC 6: Return next 6 sts to work, inc 1 st on left. KWK. 28 sts in work on left.

This completes the left short row and raglan shaping.

Cut yarn and put all stitches back into hold position.

Place carriage on right side of needle bed.

RC 000: Return first 6 stitches to work. Increase 1 stitch on right side with the 2-prong transfer tool. Knit to the left, wrap first holding needle, knit back to right. (KWK) 7 sts in work on right.

RC 2: Return next 6 sts to work, inc 1 st on right. KWK. 14 sts in work on right.

RC 4: Return next 6 sts to work, inc 1 st on right. KWK. 21 sts in work on right.

RC 6: Return next 6 sts to work, inc 1 st on right. KWK. 28 sts in work on right.

This completes the right short row and raglan shaping. There are now 119 stitches, from 59L to 60R.

Continue to increase 1 stitch both sides every other until RC 14 (20), ending with 125 (131) sts, 62L-63R (65L-66R).

Cast on 2 (5) stitches at the beginning of the next 2 rows. 129 (141) stitches, 64L-65R (70L-71R).

Reset RC to 000. Knit even to RC 140 (146). Lengthen or shorten here if desired, and make a note of the number of rows. Change to ribbing. T 6. Knit 20 rows. Turn stitch dial up as far as it will go and knit 1 row. Bind off, using stitch through stitch method.

Sizes L-XL-XXL

Hold bottom edge of yoke with knit side toward the machine, purl side facing you. Begin with the yarn marker on the bottom of the yoke. Place this stitch on needle 1 right of center 0, then pick up the required stitches on each side, a total of 119 stitches, from 59 L to 60 R.

T 8. Begin with the carriage on the left. Place all 119 stitches into hold position and set the carriage to hold.

Work left side of neck and raglan as follows:

RC 000: Return first 8 stitches to work. Increase 1 stitch on left side with the 2-prong transfer tool. Knit to the right, wrap first holding needle, knit back to left. (KWK) 9 sts in work on left.

RC 2: Return next 8 sts to work, inc 1 st on left. KWK. 18 sts in work on left.

RC 4: Return next 8 sts to work, inc 1 st on left. KWK. 27 sts in work on left.

RC 6: Return next 8 sts to work, inc 1 st on left. KWK. 36 sts in work on left.

This completes the left short row and raglan shaping.

Cut yarn and put all stitches back into hold position.

Place carriage on right side of needle bed.

RC 000: Return first 8 stitches to work. Increase 1 stitch on right side with the 2-prong transfer tool. Knit to the left, wrap first holding needle, knit back to right. (KWK) 9 sts in work on right.

RC 2: Return next 8 sts to work, inc 1 st on right. KWK. 18 sts in work on right.

RC 4: Return next 8 sts to work, inc 1 st on right. KWK. 27 sts in work on right.

RC 6: Return next 8 sts to work, inc 1 st on right. KWK. 36 sts in work on right.

This completes the right short row and raglan shaping. There are now 127 stitches, from 63L to 64R.

Continue to increase 1 stitch both sides every other until RC 24 (32-42), ending with 143 (151-161) sts. 71L-72R (75L-76R; 80L-81R).

Cast on 7 (9-11) stitches at the beginning of the next 2 rows. 157 (169-183) stitches, 78L-79R (85L-86R, 91L-92R).

Reset RC to 000. Knit even to RC 150. Lengthen or shorten here if desired, and make a note of the number of rows. Change to ribbing. T 6. Knit 20 rows. Turn stitch dial up as far as it will go and knit 1 row. Bind off, using stitch through stitch method.

Optional Sleeve Raglan and Short Row Shaping

It is recommended to also add short rows to the sleeves when adding them to the back.

Sizes S and M

Hold bottom edge of yoke with knit side toward the machine, purl side facing you. Begin with the yarn marker on the bottom of the yoke. Place this stitch on needle 1 right of center 0, then pick up the required stitches on each side, a total of 68 stitches, from 34 L to 34 R.

T 8. Begin with the carriage on the left. Place all 68 stitches into hold position and set the carriage to hold.

Work left side of raglan as follows:

RC 000: Return first 6 stitches to work. Increase 1 stitch on left side with the 2-prong transfer tool. Knit to the right, wrap first holding needle, knit back to left. (KWK) 7 sts in work on left.

RC 2: Return next 6 sts to work, inc 1 st on left. KWK. 14 sts in work on left.

RC 4: Return next 6 sts to work, inc 1 st on left. KWK. 21 sts in work on left.

This completes the left short row and raglan shaping.

Cut yarn and put all stitches back into hold position.

Place carriage on right side of needle bed.

RC 000: Return first 6 stitches to work. Increase 1 stitch on right side with the 2-prong transfer tool. Knit to the left, wrap first holding needle, knit back to right. (KWK) 7 sts in work on right.

RC 2: Return next 6 sts to work, inc 1 st on right. KWK. 14 sts in work on right.

RC 4: Return next 6 sts to work, inc 1 st on right. KWK. 21 sts in work on right.

This completes the right short row and raglan shaping. There are now 74 stitches, from 37L to 37R.

Continue to increase 1 stitch both sides every other until RC 14 (20), ending with 82 (88) sts, 41L-41R (44L-44R).

Cast on 2 (5) stitches at the beginning of the next 2 rows. 86 (98) stitches, 43L-43R (49L-49R).

Work lower sleeve following instructions on page 7.

Sizes L-XL-XXL

Hold bottom edge of yoke with knit side toward the machine, purl side facing you. Begin with the yarn marker on the bottom of the yoke. Place this stitch on needle 1 right of center 0, then pick up the required stitches on each side, a total of 72 stitches, from 36 L to 36 R.

T 8. Begin with the carriage on the left. Place all 72 stitches into hold position and set the carriage to hold.

Work left side of neck and raglan as follows:

RC 000: Return first 8 stitches to work. Increase 1 stitch on left side with the 2-prong transfer tool. Knit to the right, wrap first holding needle, knit back to left. (KWK) 9 sts in work on left.

RC 2: Return next 8 sts to work, inc 1 st on left. KWK. 18 sts in work on left.

RC 4: Return next 8 sts to work, inc 1 st on left. KWK. 27 sts in work on left.

This completes the left short row and raglan shaping.

Cut yarn and put all stitches back into hold position.

Place carriage on right side of needle bed.

RC 000: Return first 8 stitches to work. Increase 1 stitch on right side with the 2-prong transfer tool. Knit to the left, wrap first holding needle, knit back to right. (KWK) 9 sts in work on right.

RC 2: Return next 8 sts to work, inc 1 st on right. KWK. 18 sts in work on right.

RC 4: Return next 8 sts to work, inc 1 st on right. KWK. 27 sts in work on right.

This completes the right short row and raglan shaping. There are now 78 stitches, from 39L to 39R.

Continue to increase 1 stitch both sides every other until RC 24 (32-42) ending with 96 (104-114)sts, 48L-48R (52L-52R, 57L-57R).

Cast on 7 (9-11) stitches at the beginning of the next 2 rows. 110 (122-136) stitches, 55L-55R (61L-61R, 68L-68R).

Work lower sleeve following instructions on page 11.