

## Bulky Round Yoke Cardigan

Version that uses punchcards was made on a Brother 260; stitch charts are given for each tier and these are suitable for any basic midgauge or bulky machine that can knit to the specified gauge.

Sizes S-M-L-XL-XXL-XXXL, Finished Width 36 (40-44-48-52-55) inches; 92 (102-112-122-132-140) cm, plus width of button band.

Most metal bed bulky knitting machines have 110-112 needles; all sizes can be made on these machines. Size XXI requires 104 needles, and size XXXL requires 110 needles, so some plastic bed machines will not be able to knit them without an extended bed.



### Materials

Heavy #4 yarn, such as aran, that will knit to correct gauge. Sample is knitted using two colors of Caron Simply Soft Tweed and requires approximately 4-4-5-5-6-6 five-ounce balls main color and 1 ball contrast

9 buttons

**Gauge:** 16 sts, 22 rows = 10 cm, or  
4 sts, 5.5 rows = 1 inch in stockinet  
(4 sts, 5 rows in Fairisle)

**Tension:** (MT) 5 in stockinet, or whatever is necessary to obtain gauge. Fairisle tension 6, or 1 number higher than for stockinet.

It is more important to match stitch gauge; add or subtract a few rows to obtain correct length if necessary

*Note: sizes S and M have only three tiers; they do not include the “lozenge” pattern at the top of the yoke. Sizes L-XXL have only part of Tier 4, but you can knit the complete tier if you wish. Size XXXL, shown in the photo, has the complete Tier 4 Fairisle band.*

Cardigan is knitted in two parts. The yoke is made first, in three sections, and seams are where back raglan seams would normally be. There are not enough needles on the larger sizes to place the seams on the shoulders, so they have been moved to the back. After the yoke is knitted and finished, back, front and sleeves are picked up from bottom of the yoke and knitted downwards. It is much easier to knit the yoke shaping when there is no bulky garment pulling down on it, and it is also easier to adjust the length of the body and sleeves when they are knitted downward.

Since this pattern is meant to be an introduction to Fairisle yokes, only two colors are used. The contrast color is removed after knitting through each tier, but the yarn is not cut; adding the contrast color back into the carriage when beginning the next tier eliminates yarn tails, and makes it much easier to sew and finish the yoke. You may, however, add more colors if you prefer; an ounce of each additional color is more than enough.

## Abbreviations

L left

R right

st(s) stitch(es)

r(s) row(s)

HP hold position

K knit

MT main tension

P purl

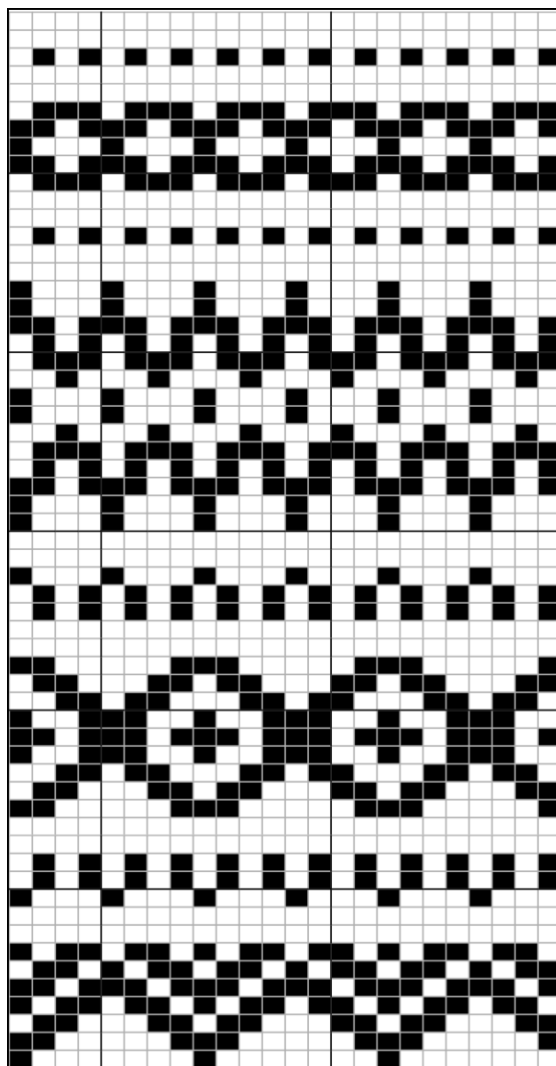
RC row counter

inc increase

dec decrease

T number on the stitch dial

x times



## Punchcard (for Brother 260 only)

***One blank card is required.*** This card is designed so that the entire yoke can be knitted without breaking either yarn. When you reach a blank row, remove the contrast yarn and hold it out of the way until it is needed again. When the blank row is the decrease row between tiers, it is easier to pass the yarn back behind the machine to keep it out of the way until you are ready to begin the next tier.

***Four tiers are included on the card; however, sizes S and M do not use any of the 4<sup>th</sup> tier, and sizes L-XXL use only part of the 4<sup>th</sup> tier.***

After knitting through the Fairisle pattern in each tier, knit 1 plain row, transfer the specified decrease stitches, then knit 1 plain row. Lock card on first pattern row of next tier and remove yoke on waste yarn, circular needle, or garter bar.

Bring required needles for next tier into work position and rehang the yoke

Reprogram machine before beginning the next tier. Free pass carriage to opposite side, set knob to KC, and free pass back to original side.

The punchcard will automatically select the stitch pattern repeats. For basic machines, select the patterning needles manually, every row. ***Use the specified needles so that the repeats match at the seams***

## Special Notes

Main tension (MT) is the number on the stitch dial that is required to knit to specified gauge. This varies, depending on the machine and yarn, but will probably be between 5-7 for stockinet on bulky machines, and 7-8 on midgauge models. Normally Fairisle requires turning the dial 1 full number higher than for stockinet. Fairisle stitches are more square than stockinet stitches; that is why the stitch and row gauge given in this pattern are different for each.

This garment is an introduction to knitting Fairisle round neck cardigans. It is designed fairly simply, but does have short row shaping on the front to lower the neck, making it more comfortable to wear and to eliminate the bulge that often occurs at the bottom of the yoke.

## Back Yoke

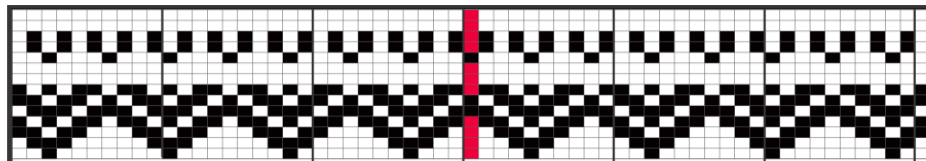
### Tier 1

Cast on 61 (65-69-77-83-87) stitches, from 30L-31R (32L-33R, 34L-35R, 38L-39R, 41L-42R, 43L-44R) with waste yarn and ravel cord.

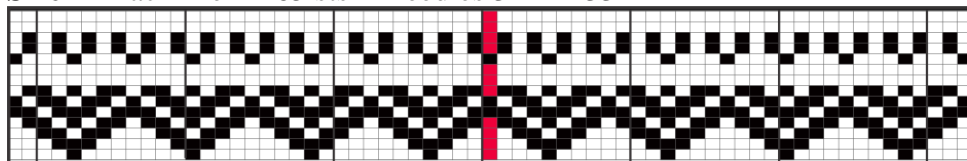
MT. Change to main color. Knit 2 rows, ending with carriage on right side of bed.

RC 000. MT +1. Main color in feeder 1, contrast in feeder 2. Work Fairisle pattern for 12 rows, ending with carriage on right. Remove contrast yarn; do not cut it, just hold it out of the way. Knit 1 row main color. (Brother 260, this is an unpunched row on the card, and the carriage will only knit main color on this row.) Carriage is now on left.

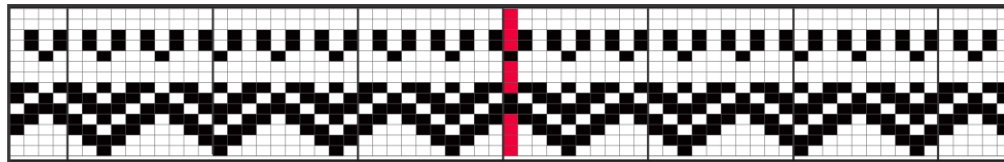
**Size S** Back Tier 1 61 sts needles 30 L – 31R



**Size M** Back Tier 1 65 sts needles 32 L – 33R



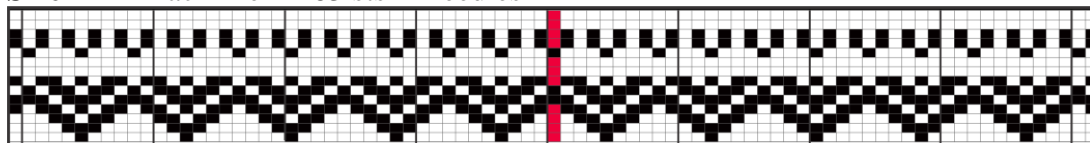
**Size L** Back Tier 1 69 sts needles 34 L – 35R



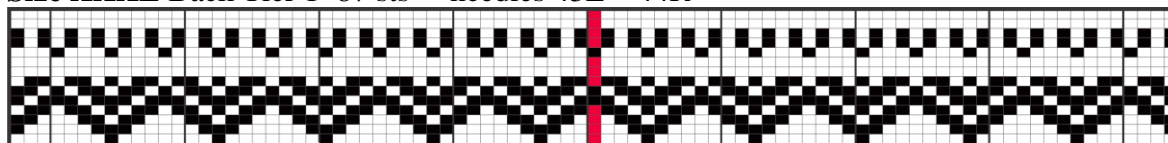
**Size XL** Back Tier 1 77 needles 38L – 39R



**Size XXL** Back Tier 1 83 sts needles 41L – 42R



**Size XXXL** Back Tier 1 87 sts needles 43L – 44R



### Decrease Row

**S:** Bring forward every 6<sup>th</sup> needle 3 x, then every 5<sup>th</sup> needle 4 x, then every 6<sup>th</sup> needle 3 x.

**M:** Bring forward every 5<sup>th</sup> needle 12 x.

**L:** Bring forward every 7<sup>th</sup> needle 2 x, then every 6<sup>th</sup> needle 7 x, then every 7<sup>th</sup> needle 1 x.

**XL:** Bring forward every 6<sup>th</sup> needle 12 x.

**XXL:** Bring forward every 7<sup>th</sup> needle 3 x, then every 6<sup>th</sup> needle 7 x, then every 7<sup>th</sup> needle 2 x.

**XXXL:** Bring forward every 7<sup>th</sup> needle 5 x, then every 6<sup>th</sup> needle 3 x, then every 7<sup>th</sup> needle 4 x.

Transfer the stitches on the extended needles to a neighboring needle and take the emptied needles back to position A (out of work). Knit 1 row main color, ending with carriage on right. Remove yoke on waste yarn, circular needle, or garter bar. Brother 260 only, lock punchcard on first row of next tier and set carriage to knit stockinet when using waste yarn.

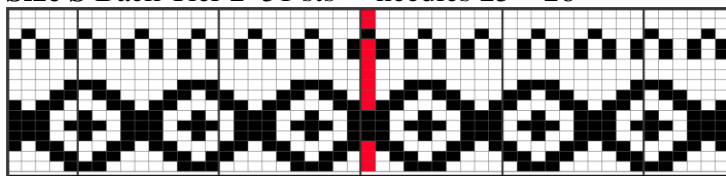
### Tier 2

Bring 51 (53-59-65-71-75) needles to work position, from 25L-26R (26L-27R, 29L-30R, 32L-33R, 35L-36R, 37L-38R). Rehang yoke on these needles. Brother 260, reprogram carriage when using waste yarn. Reset row counter to 14 and turn on card.

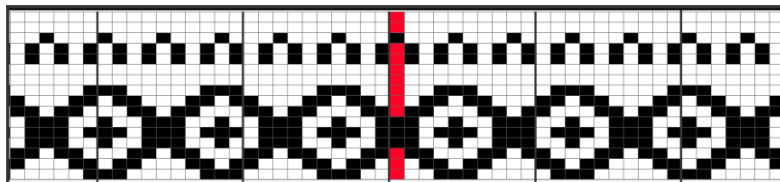
Main color in feeder 1, contrast in feeder 2. Work Fairisle pattern for 14 rows, ending with carriage on right. Remove contrast yarn; do not cut it, just hold it out of the way.

Knit 1 row main color. (this is an unpunched row on the card, and the carriage will only knit main color on this row. Carriage is now on left.

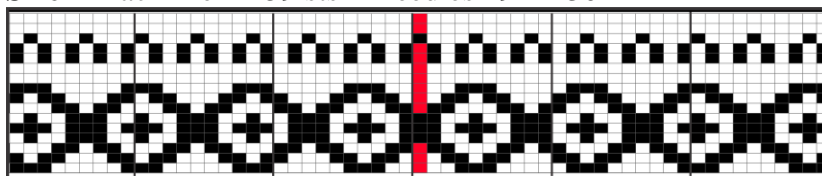
**Size S Back Tier 2** 51 sts    needles 25 – 26



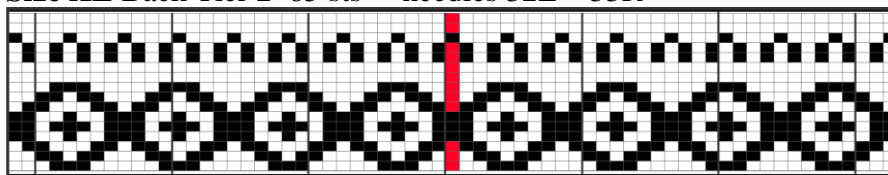
**Size M Back Tier 2** 53 sts    needles 26 – 27



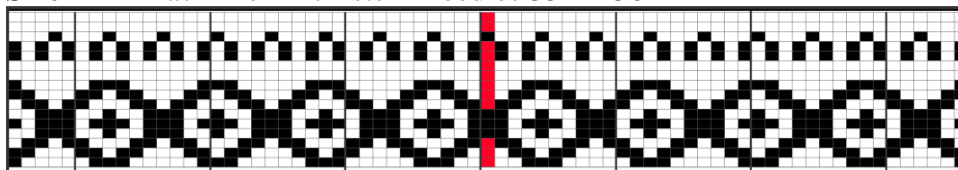
**Size L Back Tier 2** 59 sts    needles 29L – 30 R



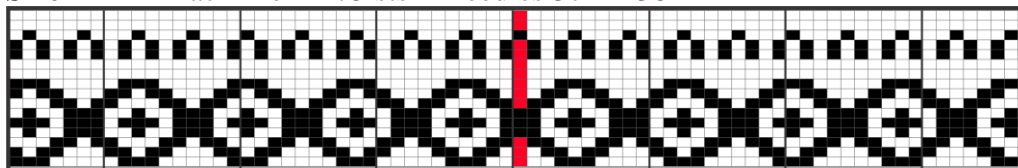
**Size XL Back Tier 2** 65 sts    needles 32L – 33R



**Size XXL Back Tier 2** 71 sts    needles 35L – 36R



**Size XXXL Back Tier 2** 75 sts    needles 37L – 38R



#### Decrease Row

**S:** Bring forward every 4<sup>th</sup> needle 3 x, then every 3<sup>rd</sup> needle 8 x, then every 4<sup>th</sup> needle 3 x.

**M:** Bring forward every 4<sup>th</sup> needle 4 x, then every 3<sup>rd</sup> needle 6 x, then every 4<sup>th</sup> needle 4 x.

**L:** Bring forward every 5<sup>th</sup> needle 4 x, then every 4<sup>th</sup> needle 5 x, then every 5<sup>th</sup> needle 3 x.

**XL:** Bring forward every 5<sup>th</sup> needle 3 x, then every 4<sup>th</sup> needle 9 x, then every 5<sup>th</sup> needle 2 x.

**XXL:** Bring forward every 5<sup>th</sup> needle 6 x, then every 4<sup>th</sup> needle 3 x, then every 5<sup>th</sup> needle 5 x.

**XXXL:** Bring forward every 5<sup>th</sup> needle 4 x, then every 4<sup>th</sup> needle 9 x, then every 5<sup>th</sup> needle 3 x.

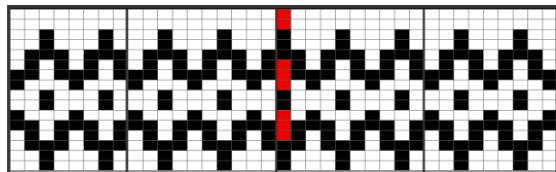
Transfer the stitches on the extended needles to a neighboring needle and take the emptied needles back to position A (out of work). Knit 1 row main color, ending with carriage on right. Remove yoke on waste yarn, circular needle, or garter bar. Brother 260 only, lock punchcard on first row of next tier and set carriage to knit stockinet when using waste yarn.

### Tier 3

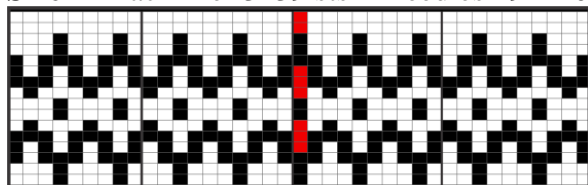
Bring 37 (39-47-51-57-59) needles to work position, from 18L-19R (19L-20R, 23L-24R, 25L-26R, 28L-29R, 29L-30R). Rehang yoke on these needles. Brother 260, reprogram carriage when using waste yarn. Reset row counter to 30 and turn on card.

Main color in feeder 1, contrast in feeder 2. Work Fairisle pattern for 14 rows, ending with carriage on right. Remove contrast yarn; do not cut it, just hold it out of the way. Knit 1 row main color. (this is an unpunched row on the card, and the carriage will only knit main color on this row. Carriage is now on left.

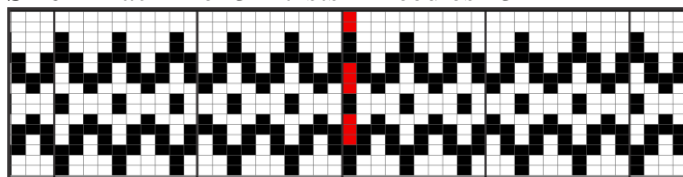
**Size S Back Tier 3** 37 sts needles 18 – 19



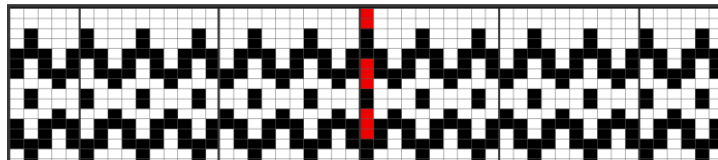
**Size M Back Tier 3** 39 sts needles 19 – 20



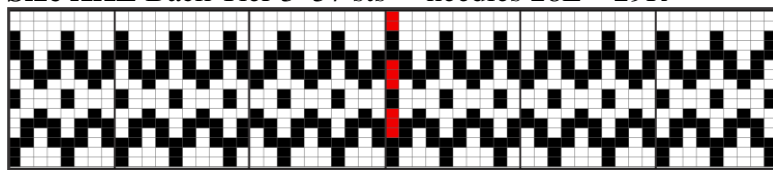
**Size L Back Tier 3** 47 sts needles 23L – 24 R



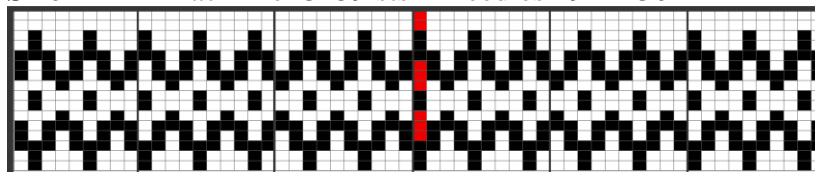
**Size XL Back Tier 3** 51 sts needles 25L – 26R



**Size XXL Back Tier 3** 57 sts needles 28L – 29R



**Size XXXL Back Tier 3** 59 sts needles 29L – 30R



### Decrease Row

**S:** Bring forward every 4<sup>th</sup> needle 1 x, then every 3<sup>rd</sup> needle 10 x.

**M:** Bring forward every 3<sup>rd</sup> needle 6 x, then every 2<sup>nd</sup> needle 2 x, then every 3<sup>rd</sup> needle 5 x.

**L:** Bring forward every 4<sup>th</sup> needle 4 x, then every 3<sup>rd</sup> needle 4 x, then every 4<sup>th</sup> needle 4 x.

**XL:** Bring forward every 4<sup>th</sup> needle 3 x, then every 3<sup>rd</sup> needle 8 x, then every 4<sup>th</sup> needle 3 x.

**XXL:** Bring forward every 4<sup>th</sup> needle 6 x, then every 3<sup>rd</sup> needle 2 x, then every 4<sup>th</sup> needle 6 x.

**XXXL:** Bring forward every 4<sup>th</sup> needle 4 x, then every 3<sup>rd</sup> needle 8 x, then every 4<sup>th</sup> needle 4 x.

Transfer the stitches on the extended needles to a neighboring needle and take the emptied needles back to position A (out of work). Knit 1 row main color, ending with carriage on right; remove yoke on waste yarn. **This completes the back yoke for sizes S and M.**

### Tier 4, sizes L-XXXL

Bring 35 (37-43-43) needles to work position, from 17L-18R (18L-19R, 21L-22R, 21L-22R). Rehang yoke on these needles.

**Size L Back Tier 4** 35 sts needles 17L – 18R



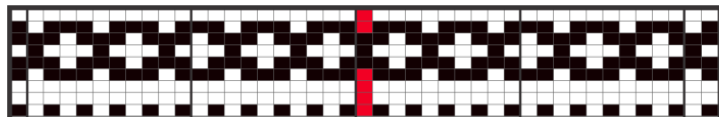
**Size XL Back Tier 4** 37 sts needle 18L – 19R



**Size XXL Back Tier 4** 43 sts needles 21L – 22R



**Size XXXL Back Tier 4** 43 sts needles 21L – 22R



**Decrease Row**

**L:** Bring forward every 4<sup>th</sup> needle 3 x, then every 3<sup>rd</sup> needle 4 x, then every 4<sup>th</sup> needle 2 x.

**XL:** Bring forward every 4<sup>th</sup> needle 2 x, then every 3<sup>rd</sup> needle 6 x, then every 4<sup>th</sup> needle 2 x.

**XXL:** Bring forward every 3<sup>rd</sup> needle 13 x, then the 2<sup>nd</sup> needle 1 x.

**XXXL:** Bring forward every 3<sup>rd</sup> needle 13 x, then the 2<sup>nd</sup> needle 1 x.

Transfer the stitches on the extended needles to a neighboring needle and take the emptied needles back to position A (out of work). Knit 1 row main color, ending with carriage on right; remove yoke on waste yarn.

**This completes the Back Yoke.**

**Right Front Yoke****Tier 1**

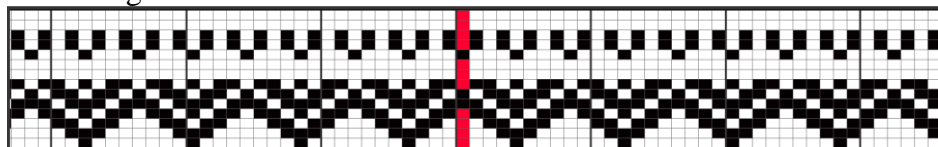
Cast on 69 (75-81-91-96-102) stitches, from 33L-36R (41L-34R, 41L-40R, 47L-44R, 55L-41R, 55L-47R) with waste yarn and ravel cord.

MT. Change to main color. Knit 2 rows, ending with carriage on right side of bed.

RC 000. MT +1. Main color in feeder 1, contrast in feeder 2. Work Fairisle pattern for 12 rows, ending with carriage on right. Remove contrast yarn; do not cut it, just hold it out of the way.

Knit 1 row main color. (Brother 260, this is an unpunched row on the card, and the carriage will only knit main color on this row.) Carriage is now on left.

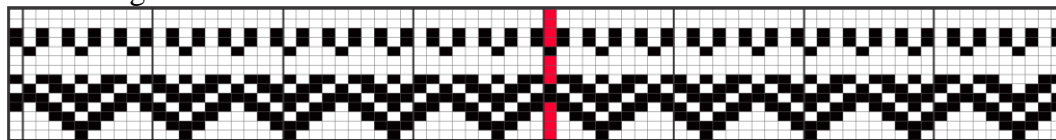
**Size S Right Front Tier 1** 69 sts needles 33L – 36R



**Size M Right Front Tier 1** 75 sts needles 41L – 34R

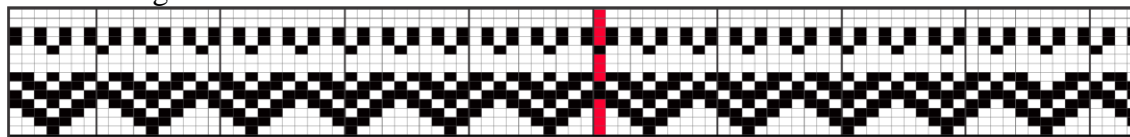


**Size L Right Front Tier 1** 81 sts needles 41 L – 40R

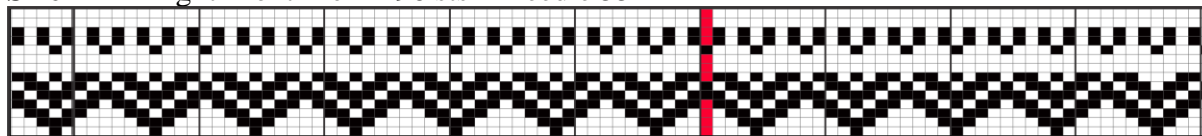




**Size XL Right Front Tier 1** 91 sts needle 47L – 44R



**Size XXL Right Front Tier 1** 96 sts needle 55L – 41 R



**Size XXXL Right Front Tier 1** 102 sts needles 55L – 47R



### Decrease Row

**S:** Bring forward every 6<sup>th</sup> needle 2 x, then every 5<sup>th</sup> needle 8 x, then every 6<sup>th</sup> needle 2 x.

**M:** Bring forward every 5<sup>th</sup> needle 14 x.

**L:** Bring forward every 7<sup>th</sup> needle 2 x, then every 6<sup>th</sup> needle 9 x, then every 7<sup>th</sup> needle 1 x.

**XL:** Bring forward the 7<sup>th</sup> needle 1 x, then every 6<sup>th</sup> needle 13 x.

**XXL:** Bring forward every 7<sup>th</sup> needle 3 x, then every 6<sup>th</sup> needle 8 x, then every 7<sup>th</sup> needle 3 x.

**XXXL:** Bring forward every 6<sup>th</sup> needle 16 x.

Transfer the stitches on the extended needles to a neighboring needle and take the emptied needles back to position A (out of work). Knit 1 row main color, ending with carriage on right. Remove yoke on waste yarn, circular needle, or garter bar. Brother 260 only, lock punchcard on first row of next tier and set carriage to knit stockinet when using waste yarn.

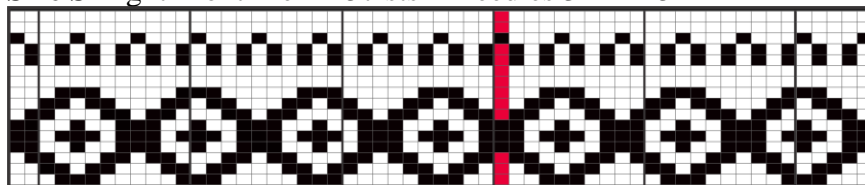
### Tier 2

Bring 57 (61-69-77-82-86) needles to work position, from 32L-25R (35L-24R, 40L-29R, 43L-34R, 43L-39R, 49L-37R). Rehang yoke on these needles. Brother 260, reprogram carriage when using waste yarn. Reset row counter to 30 and turn on card.

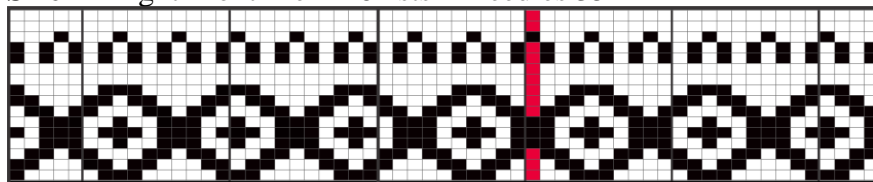
Main color in feeder 1, contrast in feeder 2. Work Fairisle pattern for 14 rows, ending with carriage on right. Remove contrast yarn; do not cut it, just hold it out of the way.

Knit 1 row main color. (this is an unpunched row on the card, and the carriage will only knit main color on this row. Carriage is now on left.

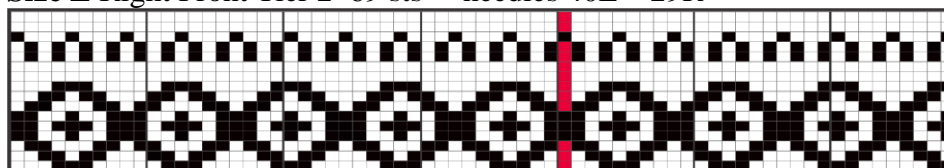
**Size S Right Front Tier 2** 57 sts needles 32L - 25 R



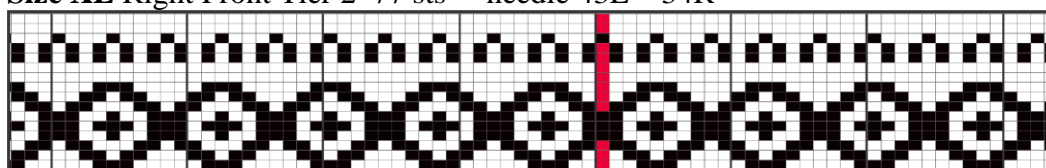
**Size M Right Front Tier 2** 61 sts    needles 35L – 24R



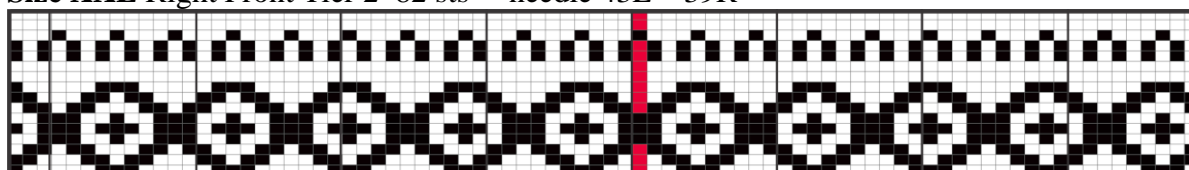
**Size L Right Front Tier 2** 69 sts    needles 40L – 29R



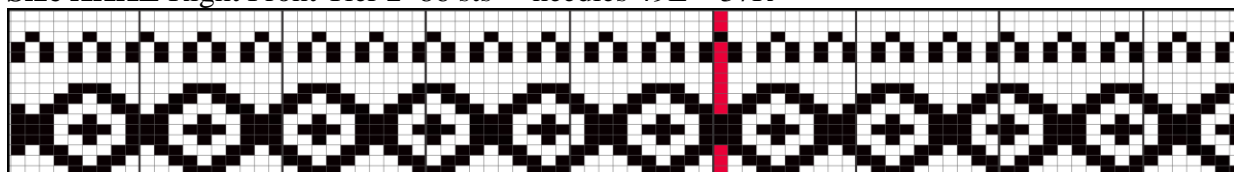
**Size XL Right Front Tier 2** 77 sts    needle 43L – 34R



**Size XXL Right Front Tier 2** 82 sts    needle 43L – 39R



**Size XXXL Right Front Tier 2** 86 sts    needles 49L – 37R



### Decrease Row

**S:** Bring forward every 4<sup>th</sup> needle 6 x, then every 3<sup>rd</sup> needle 2 x, then every 4<sup>th</sup> needle 6 x.

**M:** Bring forward every 4<sup>th</sup> needle 5 x, then every 3<sup>rd</sup> needle 6 x, then every 4<sup>th</sup> needle 5 x.

**L:** Bring forward every 6<sup>th</sup> needle 2 x, then every 5<sup>th</sup> needle 8 x, then every 6<sup>th</sup> needle 2 x.

**XL:** Bring forward every 5<sup>th</sup> needle 5 x, then every 4<sup>th</sup> needle 7x, then every 5<sup>th</sup> needle 4 x.

**XXL:** Bring forward every 5<sup>th</sup> needle 3 x, then every 4<sup>th</sup> needle 12 x, then every 5<sup>th</sup> needle 3 x.

**XXXL:** Bring forward every 5<sup>th</sup> needle 1 x, then every 4<sup>th</sup> needle 18 x, then every 5<sup>th</sup> needle 1 x.

Transfer the stitches on the extended needles to a neighboring needle and take the emptied needles back to position A (out of work). Knit 1 row main color, ending with carriage on right. Remove yoke on waste yarn, circular needle, or garter bar. Brother 260 only, lock punchcard on first row of next tier and set carriage to knit stockinet when using waste yarn.

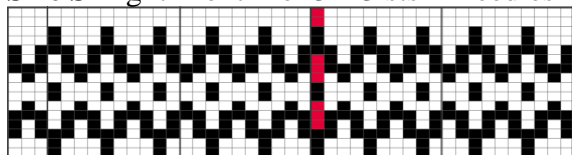
### Tier 3

Bring 43 (45-57-61-64-66) needles to work position, from 23L-20R (26L-19R, 34L-23R, 32L-29R, 34L-30R, 33L-33R). Rehang yoke on these needles.

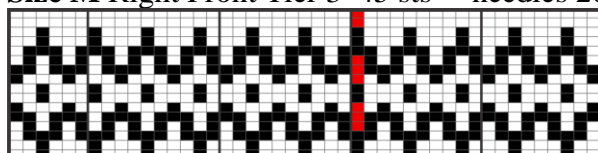
Main color in feeder 1, contrast in feeder 2. Work Fairisle pattern for 14 rows, ending with carriage on right. Remove contrast yarn; do not cut it, just hold it out of the way.

Knit 1 row main color. (this is an unpunched row on the card, and the carriage will only knit main color on this row. Carriage is now on left.

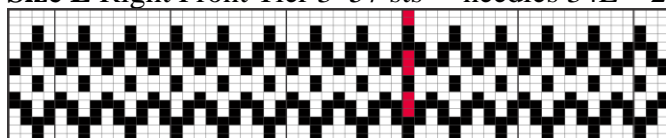
**Size S** Right Front Tier 3 43 sts needles 23L – 20R



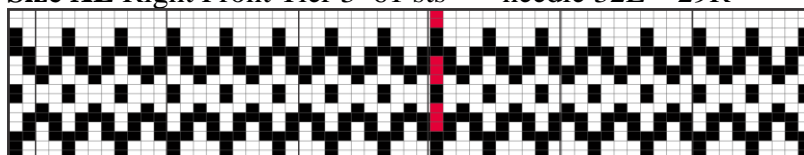
**Size M** Right Front Tier 3 45 sts needles 26 L – 19R



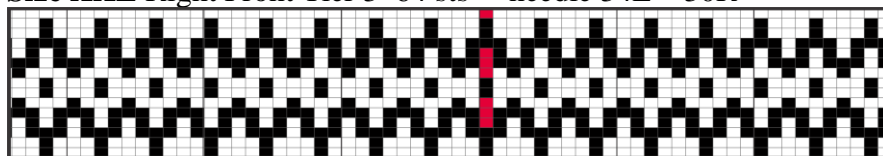
**Size L** Right Front Tier 3 57 sts needles 34L – 23R



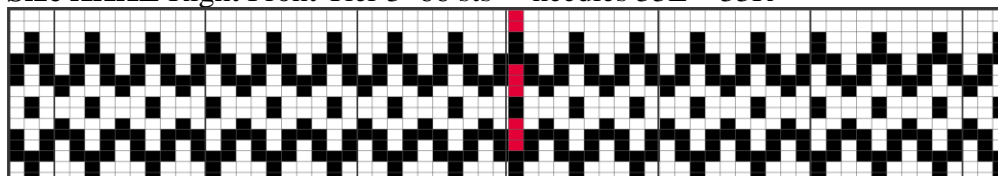
**Size XL** Right Front Tier 3 61 sts needle 32L – 29R



**Size XXL** Right Front Tier 3 64 sts needle 34L – 30R



**Size XXXL** Right Front Tier 3 66 sts needles 33L – 33R



**Decrease Row**

**S:** Bring forward every 3<sup>rd</sup> needle 13 x, then the 2<sup>nd</sup> needle 1 x.

**M:** Bring forward every 3<sup>rd</sup> needle 6 x, then every 2<sup>nd</sup> needle 5 x, then every 3<sup>rd</sup> needle 5 x.

**L:** Bring forward every 5<sup>th</sup> needle 3 x, then every 4<sup>th</sup> needle 7 x, then every 5<sup>th</sup> needle 2 x.

**XL:** Bring forward every 4<sup>th</sup> needle 5 x, then every 3<sup>rd</sup> needle 6 x, then every 4<sup>th</sup> needle 5 x.

**XXL:** Bring forward every 4<sup>th</sup> needle 4 x, then every 3<sup>rd</sup> needle 11 x, then every 4<sup>th</sup> needle 3 x.

**XXXL:** Bring forward every 4<sup>th</sup> needle 2 x, then every 3<sup>rd</sup> needle 17 x, then every 4<sup>th</sup> needle 1 x.

Transfer the stitches on the extended needles to a neighboring needle and take the emptied needles back to position A (out of work). Knit 1 row main color, ending with carriage on right; remove yoke on waste yarn.

**This completes the Right Front/Sleeve Yoke for sizes S and M.**

**Tier 4, sizes L-XXXL**

Bring 45 (45-46-46) needles to work position, from 20L-25R (21L-24R, 22L-24R, 22L-24R). Rehang yoke on these needles.

Main color in feeder 1, contrast in feeder 2. Work Fairisle pattern for 1 (1-6-8) rows. Cut contrast yarn. Knit 1 row main color

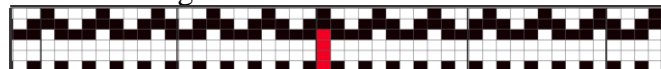
**Size L Right Front Tier 4 45 sts needles 20L-25R**



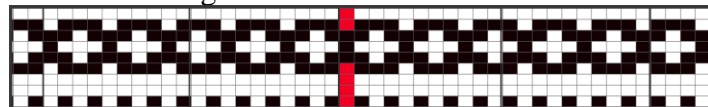
**Size XL Right Front Tier 4 45 sts needle 24L – 21R**



**Size XXL Right Front Tier 4 46 sts 22L – 24R**



**Size XXXL Right Front Tier 4 46 sts needles 22L – 24R**

**Decrease Row**

**L:** Bring forward every 3<sup>rd</sup> needle 14 x.

**XL:** Bring forward every 3<sup>rd</sup> needle 14 x.

**XXL:** Bring forward every 4<sup>th</sup> needle 1 x, then every 3<sup>rd</sup> needle 13 x.

**XXXL:** Bring forward every 4<sup>th</sup> needle 2 x, then every 3<sup>rd</sup> needle 9 x, then the 4<sup>th</sup> needle 2 x.

Transfer the stitches on the extended needles to a neighboring needle and take the emptied needles back to position A (out of work). Knit 1 row main color, ending with carriage on right; remove yoke on waste yarn.

This completes the yoke. The right edge of the fabric *while the yoke is on the machine* is the raglan seam edge. It is easy to confuse the yoke pieces, so mark the right edge with a length of contrast color yarn or a safety pin before removing it from the machine.

## Left Front Yoke

### Tier 1

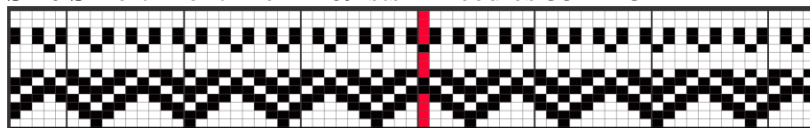
Cast on 69 (75-81-91-102) stitches, from 35L-34R (33L-42R, 39L-42R, 43L-48R, 40L-56R, 46L-56R) with waste yarn and ravel cord.

MT. Change to main color. Knit 2 rows, ending with carriage on right side of bed.

RC 000. MT +1. Main color in feeder 1, contrast in feeder 2. Work Fairisle pattern for 12 rows, ending with carriage on right. Remove contrast yarn; do not cut it, just hold it out of the way.

Knit 1 row main color. (Brother 260, this is an unpunched row on the card, and the carriage will only knit main color on this row.) Carriage is now on left.

**Size S** Left Front Tier 1 69 sts    needles 35L – 34R



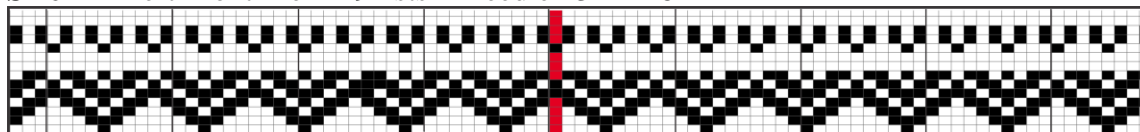
**Size M** Left Front Tier 1 75 sts    needles 33L – 42R



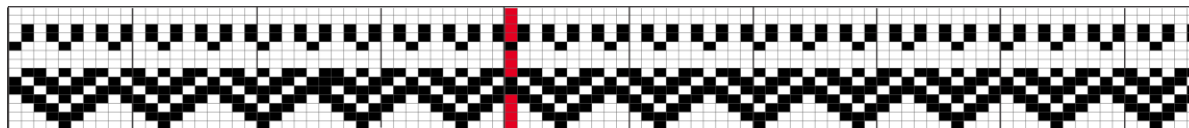
**Size L** Left Front Tier 1 81 sts    needles 39L – 42 R



**Size XL** Left Front Tier 1 91 sts    needle 43L – 48R



**Size XXL** Left Front Tier 1 96 sts    needles 40L -56R



**Size XXXL Left Front Tier 1** 102 sts needles 46L – 56R



### Decrease Row

**S:** Bring forward every 6<sup>th</sup> needle 2 x, then every 5<sup>th</sup> needle 8 x, then every 6<sup>th</sup> needle 2 x.

**M:** Bring forward every 5<sup>th</sup> needle 14 x.

**L:** Bring forward every 7<sup>th</sup> needle 2 x, then every 6<sup>th</sup> needle 9 x, then every 7<sup>th</sup> needle 1 x.

**XL:** Bring forward the 7<sup>th</sup> needle 1 x, then every 6<sup>th</sup> needle 13 x.

**XXL:** Bring forward every 7<sup>th</sup> needle 3 x, then every 6<sup>th</sup> needle 8 x, then every 7<sup>th</sup> needle 3 x.

**XXXL:** Bring forward every 6<sup>th</sup> needle 16 x.

Transfer the stitches on the extended needles to a neighboring needle and take the emptied needles back to position A (out of work). Knit 1 row main color, ending with carriage on right. Brother 260 only, lock punchcard on first row of next tier and set carriage to knit stockinet when using waste yarn.

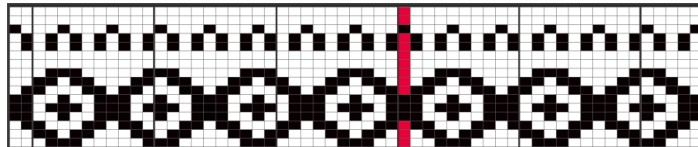
### Tier 2

Bring 57 (61-69-77-82-86) needles to work position, from 32L-25R (23L-36, 28L-41R, 33L-44R, 38L-44R, 36L-50R). Rehang yoke on these needles. Brother 260, reprogram carriage when using waste yarn. Reset row counter to 14 and turn on card.

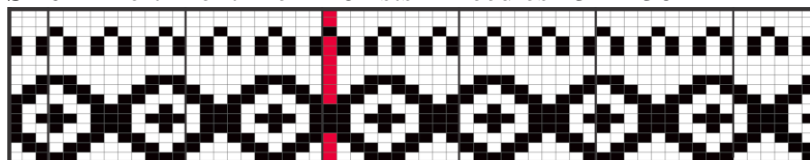
Main color in feeder 1, contrast in feeder 2. Work Fairisle pattern for 14 rows, ending with carriage on right. Remove contrast yarn; do not cut it, just hold it out of the way.

Knit 1 row main color. (this is an unpunched row on the card, and the carriage will only knit main color on this row. Carriage is now on left.

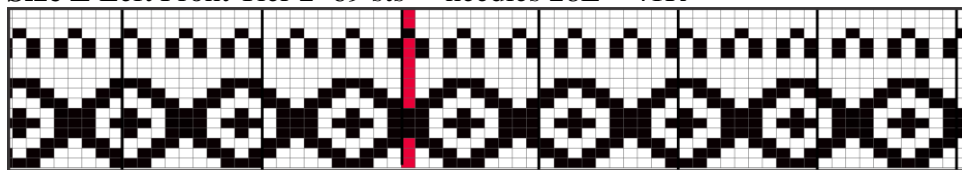
**Size S Left Tier 2** 57 sts Needles 32L 25R



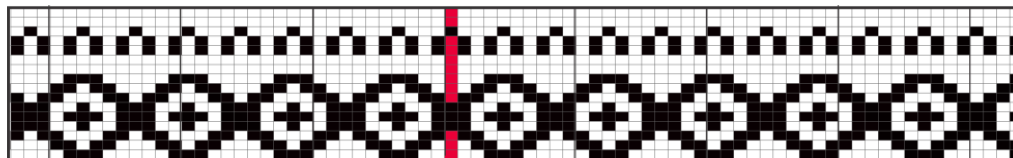
**Size M Left Front Tier 2** 61 sts needles 23L – 36R



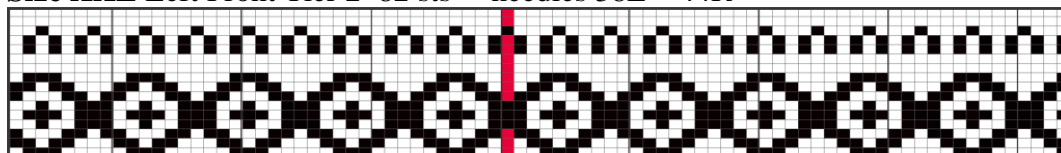
**Size L** Left Front Tier 2 69 sts needles 28L – 41R



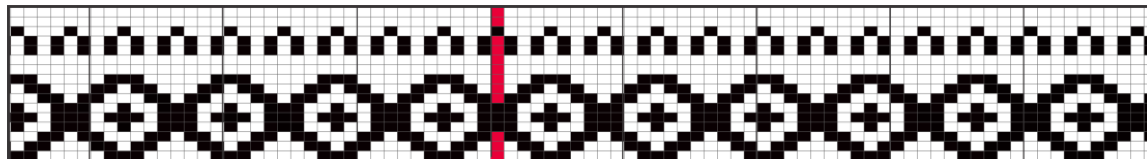
**Size XL** Left Front Tier 2 77 sts needle 33L – 44R



**Size XXL** Left Front Tier 2 82 sts needles 38L – 44R



**Size XXXL** Left Front Tier 2 86 sts needles 36L – 50R



### Decrease Row

**S:** Bring forward every 4<sup>th</sup> needle 6 x, then every 3<sup>rd</sup> needle 2 x, then every 4<sup>th</sup> needle 6 x.

**M:** Bring forward every 4<sup>th</sup> needle 5 x, then every 3<sup>rd</sup> needle 6 x, then every 4<sup>th</sup> needle 5 x.

**L:** Bring forward every 6<sup>th</sup> needle 2 x, then every 5<sup>th</sup> needle 8 x, then every 6<sup>th</sup> needle 2 x.

**XL:** Bring forward every 5<sup>th</sup> needle 5 x, then every 4<sup>th</sup> needle 7 x, then every 5<sup>th</sup> needle 5 x.

**XXL:** Bring forward every 5<sup>th</sup> needle 3 x, then every 4<sup>th</sup> needle 12 x, then every 5<sup>th</sup> needle 4 x.

**XXXL:** Bring forward every 5<sup>th</sup> needle 1 x, then every 4<sup>th</sup> needle 18 x, then every 5<sup>th</sup> needle 1 x.

Transfer the stitches on the extended needles to a neighboring needle and take the emptied needles back to position A (out of work). Knit 1 row main color, ending with carriage on right. Brother 260 only, lock punchcard on first row of next tier. Remove yoke on waste yarn, circular needle, or garter bar.

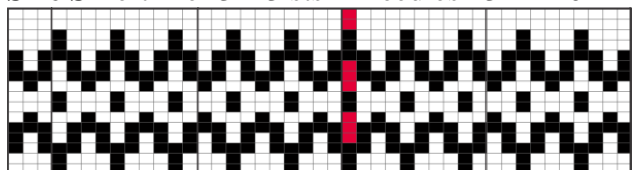
### Tier 3

Bring 43 (45-57-61-64-66) needles to work position, from 23L-20R (18L-27R, 22L-35R, 28L-33R, 29L-35R, 32L-34R). Rehang yoke on these needles. Brother 260, reprogram carriage when using waste yarn. Reset row counter to 30 and turn on card.

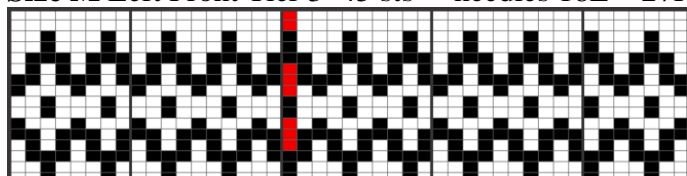
Main color in feeder 1, contrast in feeder 2. Work Fairisle pattern for 14 rows, ending with carriage on right. Remove contrast yarn; do not cut it, just hold it out of the way.

Knit 1 row main color. (this is an unpunched row on the card, and the carriage will only knit main color on this row. Carriage is now on left.

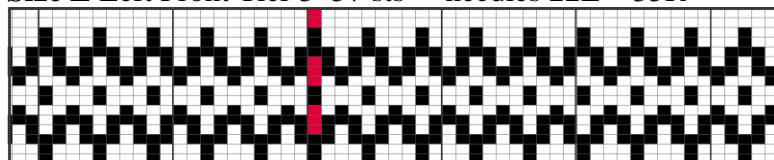
**Size S** Left Tier 3 43 sts    needles 23L – 20R



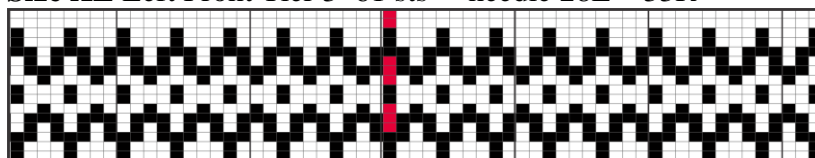
**Size M** Left Front Tier 3 45 sts    needles 18L – 27R



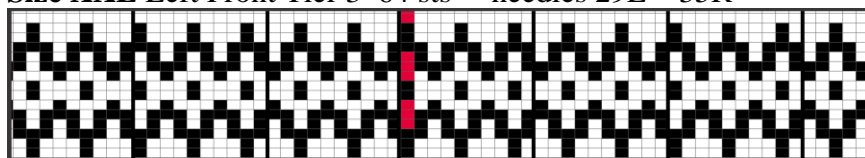
**Size L** Left Front Tier 3 57 sts    needles 22L – 35R



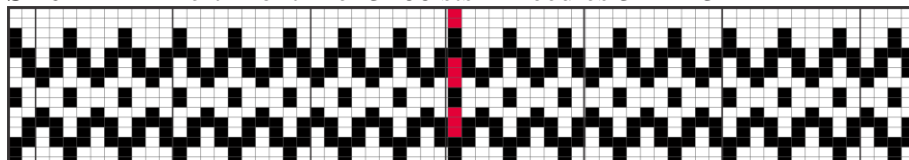
**Size XL** Left Front Tier 3 61 sts    needle 28L – 33R



**Size XXL** Left Front Tier 3 64 sts    needles 29L – 35R



**Size XXXL** Left Front Tier 3 66 sts    needles 32L – 34R



### Decrease Row

**S:** Bring forward every 3<sup>rd</sup> needle 13 x, then the 2<sup>nd</sup> needle 1 x.

**M:** Bring forward every 3<sup>rd</sup> needle 6 x, then every 2<sup>nd</sup> needle 5 x, then every 3<sup>rd</sup> needle 5 x.

**L:** Bring forward every 5<sup>th</sup> needle 3 x, then every 4<sup>th</sup> needle 7 x, then every 5<sup>th</sup> needle 2 x.

**XL:** Bring forward every 4<sup>th</sup> needle 5 x, then every 3<sup>rd</sup> needle 6 x, then every 4<sup>th</sup> needle 5 x.



**XXL:** Bring forward every 4<sup>th</sup> needle 4 x, then every 3rd needle 11 x, then every 4<sup>th</sup> needle 3 x.

**XXXL:** Bring forward every 4<sup>th</sup> needle 2 x, then every 3rd needle 17 x, then every 4<sup>th</sup> needle 1 x.

Transfer the stitches on the extended needles to a neighboring needle and take the emptied needles back to position A (out of work). Knit 1 row main color, ending with carriage on right; remove yoke on waste yarn.

This completes the Left Front/sleeve Yoke for sizes S and M.

### Tier 4, sizes L-XXXL

Bring 45 (45-46-46) needles to work position, from 20L-25R (24L-21R, 24L-22R, 24L-22R). Rehang yoke on these needles. Brother 260, reprogram carriage when using waste yarn. Reset row counter to 30 and turn on card.

Main color in feeder 1, contrast in feeder 2. Work Fairisle pattern for 1 (1-6-8) rows. Cut contrast yarn. Knit 1 row main color

**Size L Back Tier 4** 35 sts needles 17L – 18R



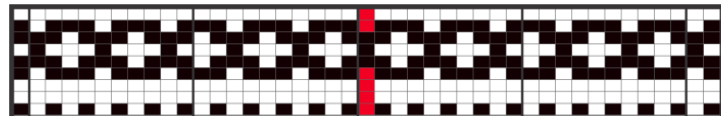
**Size XL Back Tier 4** 37 sts needle 18L – 19R



**Size XXL Back Tier 4** 43 sts needles 21L – 22R



**Size XXXL Back Tier 4** 43 sts needles 21L – 22R



### Decrease Row

**L:** Bring forward every 3rd needle 14 x.

**XL:** Bring forward every 3rd needle 14 x.

**XXL:** Bring forward every 4<sup>th</sup> needle 1 x, then every 3rd needle 13 x.

**XXXL:** Bring forward every 4<sup>th</sup> needle 2 x, then every 3rd needle 9 x, then the 4<sup>th</sup> needle 2 x.

Transfer the stitches on the extended needles to a neighboring needle and take the emptied needles back to position A (out of work). Knit 1 row main color, ending with carriage on right; remove yoke on waste yarn.

This completes the yoke. The left edge of the fabric *while the yoke is on the machine* is the raglan seam edge. It is easy to confuse the yoke pieces, so mark the left edge with a length of contrast color yarn or a safety pin before removing it from the machine.

## Neckband

Sew the fronts to the back, being careful to sew the *marked* edges to the back. **Note: the end stitches on the raglan edges are seam stitches.** There are four of these, one on each front/sleeve section, and one on each side of the back. When rehang the neck edge, pick up stitches until the next to last (edge) stitch, then pick up the edge stitch onto the same needle. There should be a total of 4 doubled stitches, one on each side of both seams. This turns the edge seam stitches to the inside of the yoke. Sometimes the edge stitch is hard to find, but be sure to pick it up. That is a “live” stitch, and failure to pick it up means it will eventually run.

Rehang the top edge of yoke on 80 (80-84-85-89-91) needles.

MT -2 full numbers. With main color, knit 16 rows. Turn tension dial up as high as it will go and knit 1 row. Convert to knit 1, purl 1 ribbing. Turn band down to inside and sew bind off edge to first row of ribbing.

Many people find it easier to work in the yarn ends at this point, completely finishing the yoke section.

## Body and Sleeves

**Back, Fronts, and Sleeves are picked up from the bottom edge of the yoke and knitted downwards. Because of the way stockinet stitch is formed, there is always 1 less stitch; this is not a mistake.** Increases and decreases are made using the 2-prong transfer tool; this is often called fully-fashioned shaping. If you prefer a more visible increase/decrease, use the 3-prong tool instead.

## Back

With knit side toward the machine, purl side facing you, pick up the main color stitches from Back and rehang on 60 (64-68-76-82-86) needles, evenly centered on machine.

MT, RC 000. E-wrap cast on 1 st next to carriage (this is the seam st). Thread main color into carriage.

K 1 row, e-wrap cast on 1 st next to carriage for seam st. K 1 row.

Inc 1 st each side with 2-prong transfer tool, K 2 rows.

RC 4. Cast on 4 (6-7-8-9-10) sts at the beginning of the next 2 rows. 72 (80-86-96-104-110) sts.

RC 000. Knit even to RC 68 (68-68-68-72-80) or desired length before adding bottom ribbing. Thread a tapestry needle with ravel cord and create a lifeline by running it through every stitch.

**Do not remove knitting from machine.**

Change to ribbing. MT-2 full numbers (MT-1 if you prefer a looser rib that does not pull in as much).

K 12 rows. Turn tension dial up at least 4 full numbers, or as high as it will go. This is the bind off row, and it needs to be much looser than normal stockinet. K 1 row.

Convert to ribbing; drop every other stitch down to the lifeline, and latch back up as K stitches. Bind off with stitch through stitch method.

## Right Front

With knit side toward the machine, pick up the main color stitches from Right Front and rehang on 30 (32-34-38-41-43) needles.

Place carriage on R side of bed.

MT, RC 000. E-wrap cast on 1 st on R, next to the carriage, for seam stitch. 31 (33-35-39-42-44) stitches now on machine.

K 2 rows, inc 1 st on right side.

K 2 rows.

RC 4. Cast on 4 (6-7-8-9-10) sts at the beginning of the next row 36 (40-43-48-52-55) sts. K back to right.

RC 000. Knit even to RC 68, or desired length before adding bottom ribbing.

Thread a tapestry needle with ravel cord and create a lifeline by running it through every stitch.

***Do not remove knitting from machine.***

MT-2 full numbers. (MT-1 if you prefer a looser rib that does not pull in as much).

K 12 rows. Turn tension dial up at least 4 full numbers, or as high as it will go. K 1 row.

Convert to ribbing; drop every other stitch down to the lifeline, and latch back up as K stitches.

Bind off with stitch through stitch method.

## Optional Right Front Neck Shaping

This is worked by short rows. It lowers the front neck, is more comfortable for many people, and also reduces the bulge that often develops at the bottom of the yoke, especially on larger sizes. It is worked ***at the same time as the raglan armhole shaping***, and continues down below the armhole, so does require some concentration. To make the shaped neckline, first pick up all the neck stitches, as in the instructions above. Leave all of them in hold position. Carriage should be on right side of bed (armhole side.) Set carriage to hold.

RC 000: Return first 3 needles on R to WP. E-wrap one additional needle next to the carriage for the seam stitch, push it back to upper work position. 4 needles are now in work, including the e-wrapped one. Thread the carriage with main color and K across and back to R.

RC 2: Inc 1 st on R. Return next 3 needles to WP; K across and back. 8 needles are now in work. Cast on required number of stitches for armhole.

***This completes the armhole.*** Knit even on the R side from here on, while continuing to add short row stitches.

Reset the row counter to 000.

Return 3 more sts to WP, knit across and back.

Now return 4 sts to WP every other row 3 (3-3-3-4-4) times, then 9 (11-13-17-16-18) sts once.

All needles are now in work and neck shaping is complete.

## Left Front

With knit side toward the machine, pick up the main color stitches from Left Front/Sleeve Yoke and rehang on 30 (32-34-38-41-43) needles.

Place carriage on L side of bed.

MT, RC 000. E-wrap cast on 1 st on L, next to the carriage, for seam stitch. 31 (33-35-39-42-44) stitches now on machine.

K 2 rows, inc 1 st on left side.

K 2 rows.

RC 4. Cast on 4 (6-7-8-9-10) sts at the beginning of the next row 36 (40-43-48-52-55) sts. K back to Left.

Complete same as for Right Front, above.

### Optional Left Front Neck Shaping

Pick up all the neck stitches, as in the instructions above. Leave all of them in hold position. Carriage should be on left side of bed (armhole side.) Set carriage to hold.

RC 000: Return first 3 needles on L to WP. E-wrap one additional needle next to the carriage for the seam stitch, push it back to upper work position. 4 needles are now in work, including the e-wrapped one. Thread the carriage with main color; K across and back to L.

RC 2: Inc 1 st on L. Return next 3 needles to WP; K across and back. 8 needles are now in work. Cast on required number of stitches for armhole.

***This completes the armhole.*** Knit even on the L side from here on, while continuing to add short row stitches.

Reset the row counter to 000.

Return 3 more sts to WP, knit across and back.

Now return 4 sts to WP every other row 3 (3-3-3-4-4) times, then 9 (11-13-17-16-18) sts once. All needles are now in work and neck shaping is complete.

Complete same as for Right Front.

### Sleeve

With knit side toward the machine, pick up the main color stitches between Back and Right Front and rehang on 40 (44-48-54-56-60) needles, evenly centered on machine.

MT, RC 000. E-wrap cast on 1 st next to carriage (this is the seam st). Thread main color into carriage.

K 1 row, e-wrap cast on 1 st next to carriage for seam st. K 1 row.

RC 2. Inc 1 st each side with 2-prong transfer tool, K 2 rows.

RC 4. Cast on 4 (6-7-8-9-10) sts at the beginning of the next 2 rows. 52 (60-66-74-78-84) sts. Reset RC to 000.

#### Shape Lower Sleeve as follows:

S: Dec 1 st both sides every 12 rows 5x, then 1 st both sides every 11 rows 1x. K even to RC 82 on remaining 40 sts.

M: Dec 1 st both sides every 9 rows 2x, then 1 st both sides every 8 rows 7x. K even to RC 82 on remaining 42 sts.

L: Dec 1 st both sides every 8 rows 5x, then 1 st both sides every 7 rows 5x. K even to RC 82 on remaining 46 sts.

XL: Dec 1 st both sides every 6 rows 12x, then 1 st both sides every 5 rows 1x. K even to RC 82 on remaining 48 sts.

XXL: Dec 1 st both sides every 5 rows 5x, then 1 st both sides every 6 rows 9x. K even to RC 84 on remaining 50 sts.

XXXL: Dec 1 st both sides every 6 rows 6x, then 1 st both sides every 5 rows 9x. K even to RC 86 on remaining 54 sts.

Remove sleeve on waste yarn.

Make other sleeve the same

### **Cuff**

Rehang main color stitches on 33 (35-37-39-41-43) needles, decreasing 7 (7-9-9-9-11) sts by hanging 2 sts on specified needles, as follows:

S: 5<sup>th</sup> needle 1x, 4<sup>th</sup> needle 6x

M: 5<sup>th</sup> needle 2x, 4<sup>th</sup> needle 4x, 5<sup>th</sup> needle 1x

L: 4<sup>th</sup> needle 4x, 3<sup>rd</sup> needle 2x, 4<sup>th</sup> needle 3x

XL: 4<sup>th</sup> needle 9x

XXL: 5<sup>th</sup> needle 1x, 4<sup>th</sup> needle 8x

XXXL: 4<sup>th</sup> needle 4x, 3<sup>rd</sup> needle 4x, 4<sup>th</sup> needle 3x

*Do not remove waste yarn yet.*

MT-2 full numbers.

K 16 rows. Turn tension dial up at least 4 full numbers, or as high as it will go. K 1 row.

Convert to ribbing; drop every other stitch down to the lifeline, and latch back up as K stitches.

Bind off with stitch through stitch method.

Remove waste yarn.

### **Button Band**

This can vary a little, and the following is just a recommendation. It is best to make a test band on one side of the gauge swatch; if you no longer have the swatch, it may be necessary to knit the band a second time after checking the fit, so always make the button band side first.

This is a folded stockinet band. With knit side toward machine, purl side facing you, hold the left front up to the machine. To be sure of having enough needles, start near one end of the bed. Pick up 3 stitches per every 4 rows in the ribbing and stockinet sections, and 2 stitches per every 3 rows in the Fairisle yoke section.

RC 000, T 9, knit 1 row. T 7, knit 12 rows. T9, Knit 1 row. T 7, knit 12 rows. Hang hem from first loose row, then bind off.

If you prefer, instead of hanging the hem, turn the tension dial up as high as it will go, knit 1 row, bind off using stitch through stitch method, turn band to inside and sew in place.

### **Buttonhole Band**

There are nine 3-stitch buttonholes, evenly spaced. You may use any buttonhole method you prefer; this one, demonstrated by Knitters' Edge, is very neat and easy.

<https://www.youtube.com/watch?v=2GTw-mP4WCs&t=429s> Except for the buttonholes, work the band same as above.

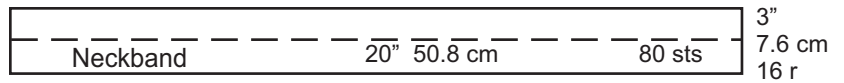
Sew side and sleeve seams, work in all yarn ends. Sew on buttons. Block if desired

# Fairisle Yoke Cardigan

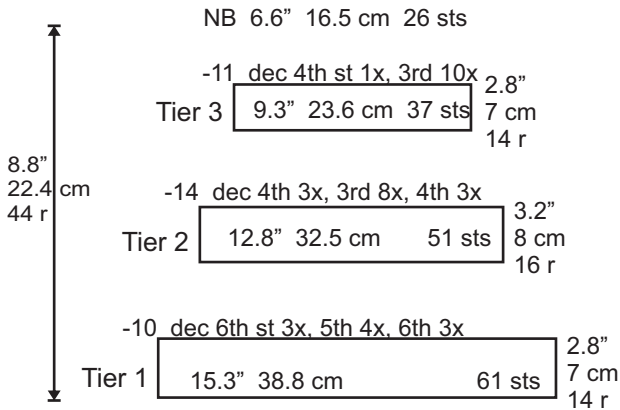
Size S Finished Chest 36"

4 sts, 5.5 rows = 1" stockinet

4 sts, 5 rows = 1" Fairisle



## Back Yoke



## Shaping Notes

Shaping is sts-rows-times;

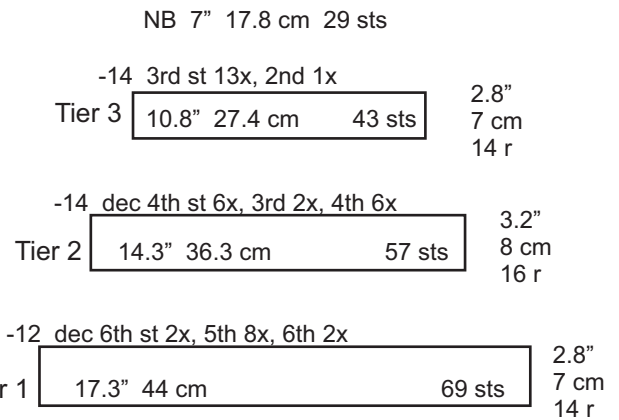
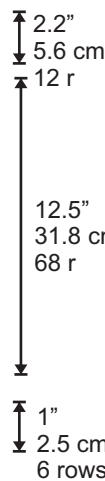
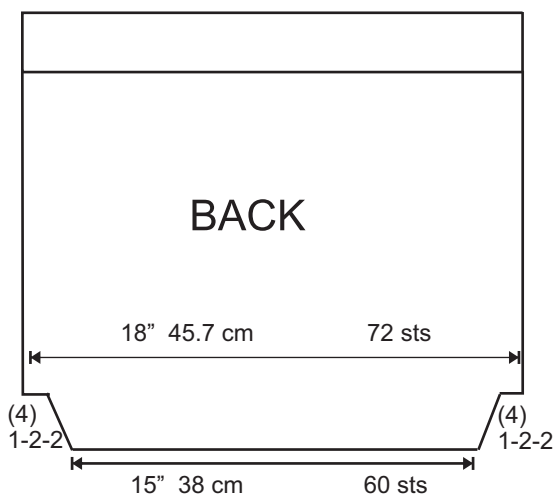
1-2-2 means 1 st every 2 rows 2 times. When the line slants outwards (raglan seams) these are increases. The number in ( ) is the number of stitches to cast on at base of armhole.

When the line slants inwards (sleeve seams) these are decreases.

- on sleeves means total number of sts to decrease on that side

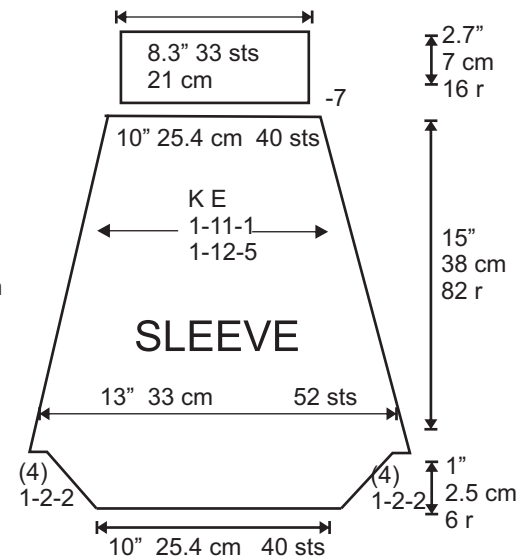
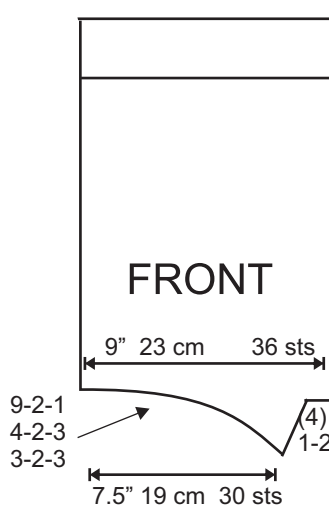
- on yoke means total number of sts to decrease for that tier.

## Front/Sleeve Yoke



Numbers at neck edge are amount of stitches to short row. 3-2-3 means short row 3 stitches every 2 rows 3 times. 4-2-3, 9-2-1 means short row 4 stitches every 2 rows 3 times, 9 stitches once.

Begin with all neck sts in hold. Return groups of sts to work position, every 2 rows, as shown.

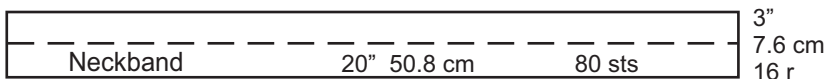


# Fairisle Yoke Cardigan

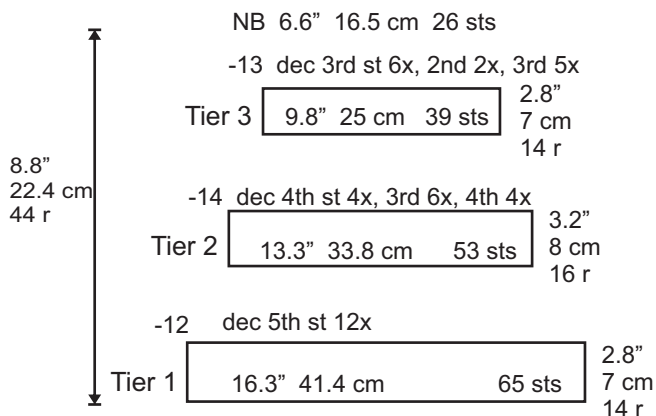
Size M Finished Chest 40"

4 sts, 5.5 rows = 1" stockinet

4 sts, 5 rows = 1" Fairisle



## Back Yoke



## Shaping Notes

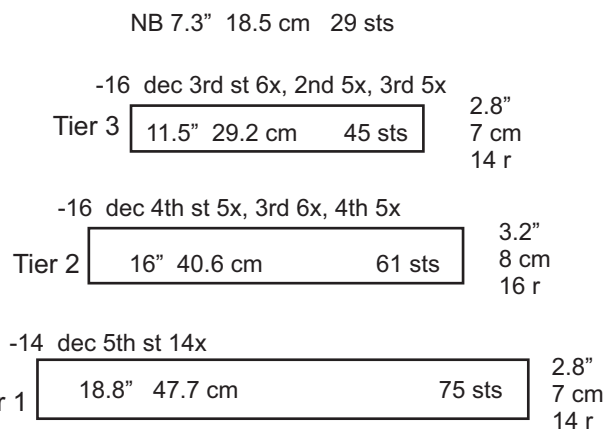
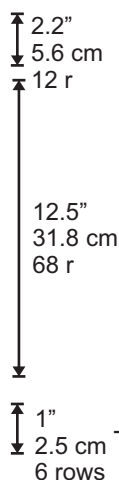
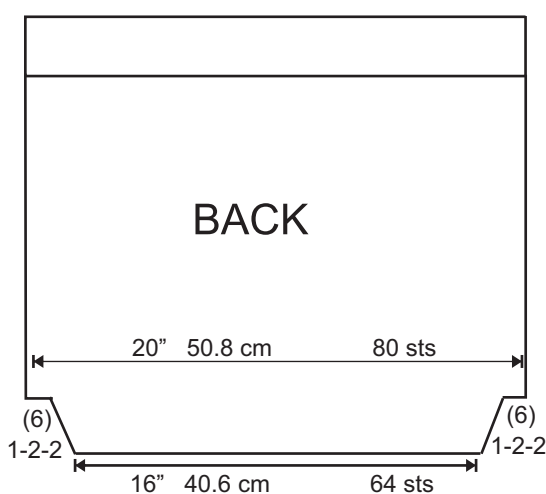
Shaping is sts-rows-times;

1-2-2 means 1 st every 2 rows 2 times. When the line slants outwards (raglan seams) these are increases. The number in ( ) is the number of stitches to cast on at base of armhole. When the line slants inwards (sleeve seams) these are decreases.

- on sleeves means total number of sts to decrease on that side

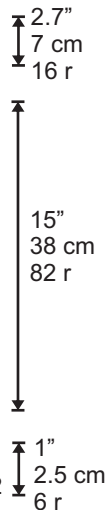
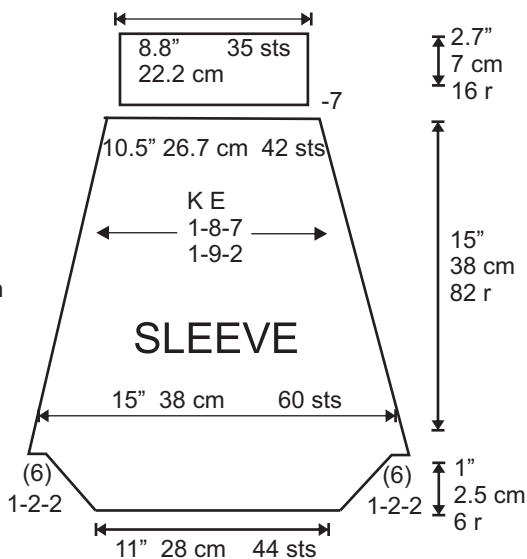
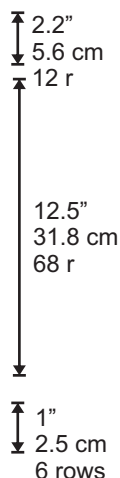
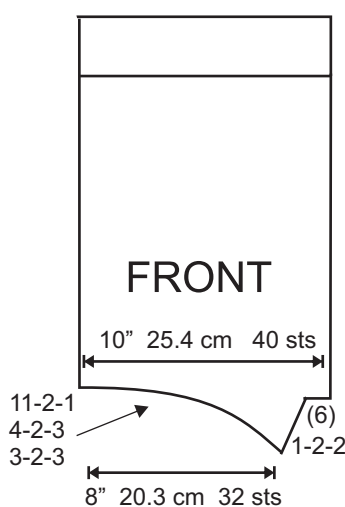
- on yoke means total number of sts to decrease for that tier.

## Front/Sleeve Yoke



Numbers at neck edge are amount of stitches to short row. 3-2-3 means short row 3 stitches every 2 rows 3 times. 4-2-3, 11-2-1 means short row 4 stitches every 2 rows 3 times, 11 stitches once.

Begin with all neck sts in hold. Return groups of sts to work position, every 2 rows, as shown.



# Fairisle Yoke Cardigan

Sizes L Finished Chest 44"

4 sts, 5.5 rows = 1" stockinet

4 sts, 5 rows = 1" Fairisle

## Back Yoke

NB 6.5" 16.5 cm 26 sts

-9 dec 4th st 3x, 3rd 4x, 4th 2x

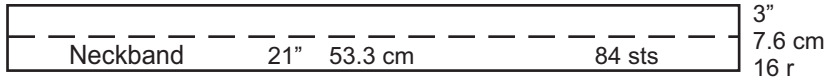
Tier 4 8.8" 22.4 cm 35 sts .6"  
1.5 cm  
3 r

-12 dec 4th st 4x, 3rd 4x, 4th 4x  
Tier 3 11.8" 30 cm 47 sts 2.8"  
7 cm  
14 r

-12 dec 5th st 4x, 4th 5x, 5th 3x  
Tier 2 14.8" 37.6 cm 59 sts 3.2"  
8 cm  
16 r

-10 dec 7th st 2x, 6th 7x, 7th 1x  
Tier 1 17.3" 44 cm 69 sts 2.8"  
7 cm  
14 r

9.8"  
25 cm  
49 r



## Shaping Notes

Shaping is sts-rows-times;

1-2-2 means 1 st every 2 rows 2 times. When the line slants outwards (raglan seams) these are increases. The number in () is the number of stitches to cast on at base of armhole.

When the line slants inwards (sleeve seams) these are decreases.

- on sleeves means total number of sts to decrease on that side

- on yoke means total number of sts to decrease for that tier.

## Front/Sleeve Yoke

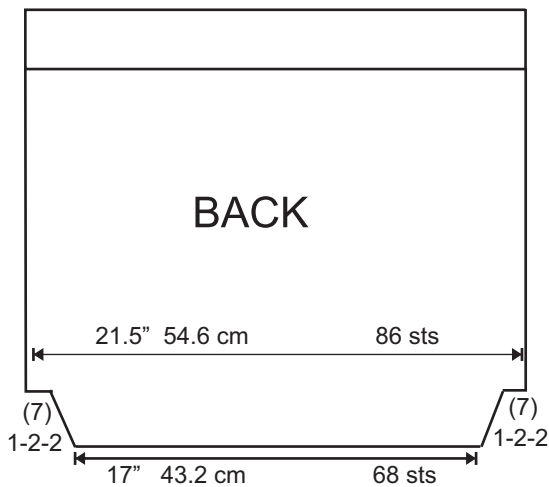
NB 7.8" 19.8 cm 31 sts

-14 dec 3rd st 14x  
Tier 4 10" 25.4 cm 45 sts .6"  
1.5 cm  
3 r

-12 dec 5th st 3x, 4th 7x, 5th 2x  
Tier 3 14" 35.6 cm 57 sts 2.8"  
7 cm  
14 r

-12 6th 2x, 5th 8x, 6th 2x  
Tier 2 17.3" 44 cm 69 sts 3.2"  
8 cm  
16 r

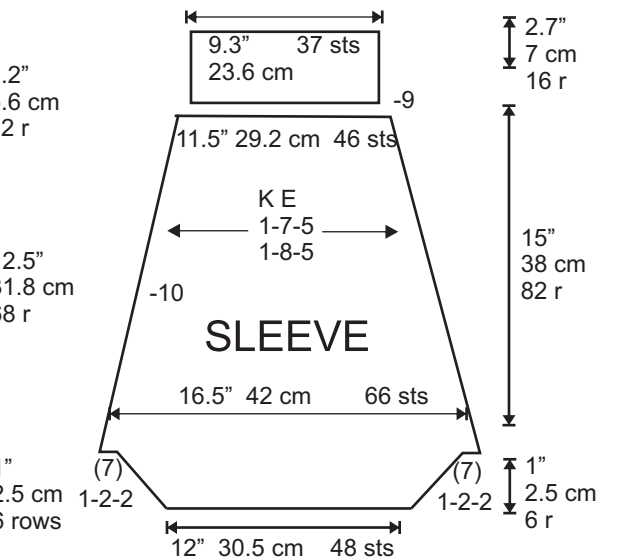
-12 dec 7th st 2x, 6th 9x, 7th 1x  
Tier 1 20.3" 51.6 cm 81 sts 2.8"  
7 cm  
14 r



2.2"  
5.6 cm  
12 r

12.5"  
31.8 cm  
68 r

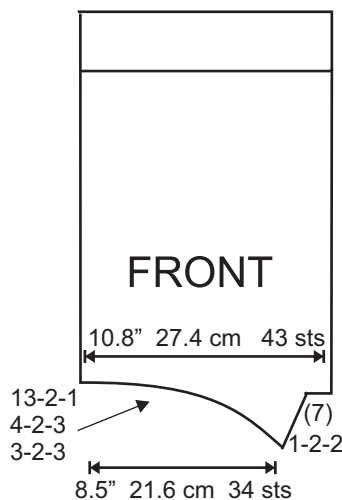
1"  
2.5 cm  
6 rows



2.2"  
5.6 cm  
12 r

12.5"  
31.8 cm  
68 r

1"  
2.5 cm  
6 rows



Numbers at neck edge are amount of stitches to short row.  
3-2-3 means short row 3 stitches every 2 rows 3 times.  
4-2-3, 13-2-1 means short row 4 stitches every 2 rows 3 times, 13 stitches once..

Begin with all neck sts in hold.  
Return groups of sts to work position, every 2 rows, as shown.



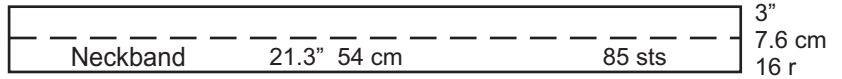
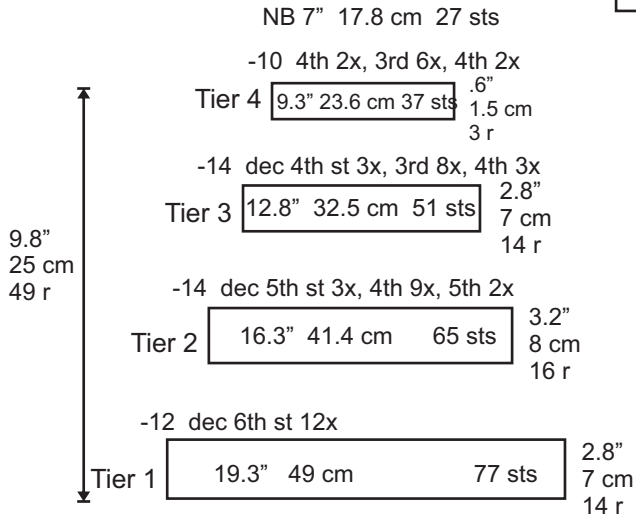
# Fairisle Yoke Cardigan

Sizes XL Finished Chest 48"

4 sts, 5.5 rows = 1" stockinet

4 sts, 5 rows = 1" Fairisle

## Back Yoke



## Shaping Notes

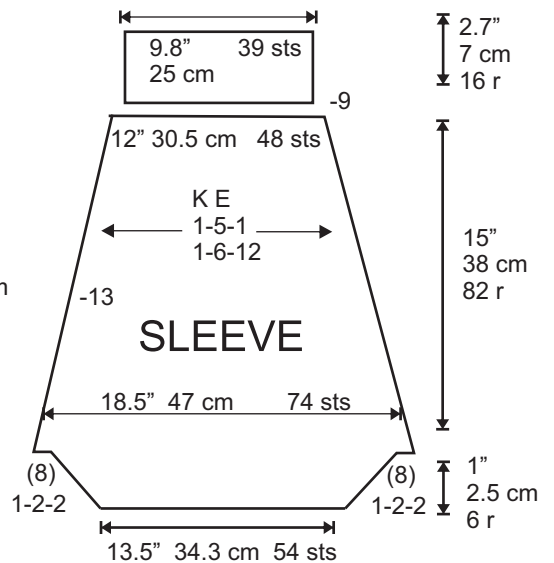
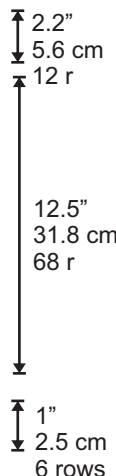
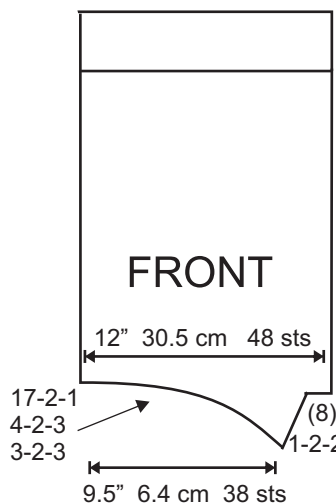
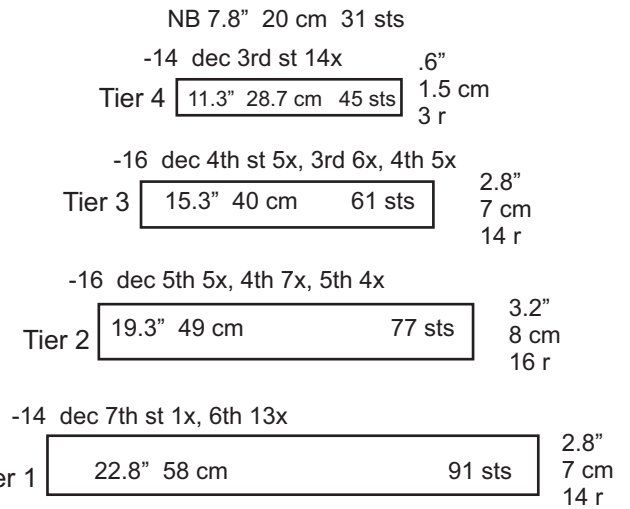
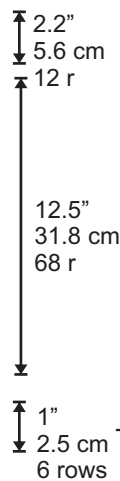
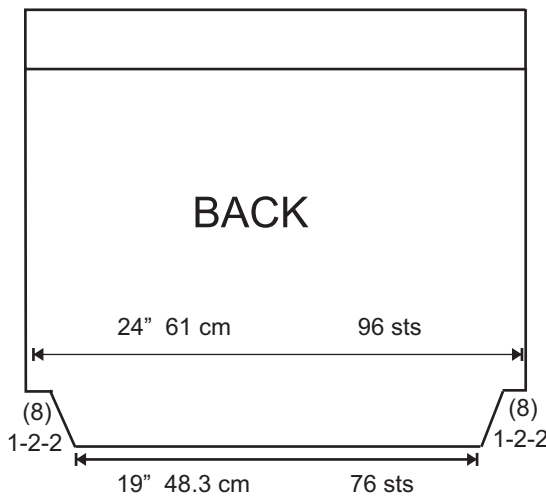
Shaping is sts-rows-times;

1-2-2 means 1 st every 2 rows 2 times. When the line slants outwards (raglan seams) these are increases. The number in ( ) is the number of stitches to cast on at base of armhole. When the line slants inwards (sleeve seams) these are decreases.

- on sleeves means total number of sts to decrease on that side

- on yoke means total number of sts to decrease for that tier.

## Front/Sleeve Yoke



Numbers at neck edge are amount of stitches to short row. 3-2-3 means short row 3 stitches every 2 rows 3 times. 4-2-3, 17-2-1 means short row 4 stitches every 2 rows 3 times, 17 stitches once.

Begin with all neck sts in hold. Return groups of sts to work position, every 2 rows, as shown.

# Fairisle Yoke Cardigan

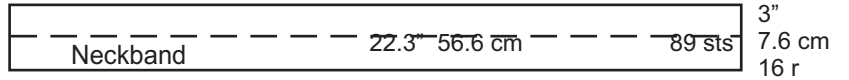
Size XXL Finished Chest 52"

4 sts, 5.5 rows = 1" stockinet

4 sts, 5 rows = 1" Fairisle

## Back Yoke

NB 7.3" 18.5 cm 29 sts



-14 dec 3rd st 13x, 2nd 1x

Tier 4 10.8" 27.4 cm 43 sts  
1.2" 3 cm  
6 r

-14 dec 4th 6x, 3rd 2x, 4th 6x

Tier 3 14.3" 36.3 cm 57 sts  
2.8" 7 cm  
14 r

-14 dec 5th st 6x, 4th 3x, 5th 5x

Tier 2 17.8" 45 cm 71 sts  
3.2" 8 cm  
16 r

-12 dec 7th 3x, 6th 7x, 7th 2x

Tier 1 20.8" 52.7 cm 83 sts  
2.8" 7 cm  
14 r

11" 28 cm 55 r

## Shaping Notes

Shaping is sts-rows-times;

1-2-2 means 1 st every 2 rows 2 times. When the line slants outwards (raglan seams) these are increases. The number in ( ) is the number of stitches to cast on at base of armhole. When the line slants inwards (sleeve seams) these are decreases.

- on sleeves means total number of sts to decrease on that side

- on yoke means total number of sts to decrease for that tier.

## Front/Sleeve Yoke

NB 8" 20.3 cm 32 sts

-14 dec 4th st 1x, 3rd 13x

Tier 4 11.5" 29.2 cm 46 sts  
1.2" 3 cm  
6 r

-18 dec 4th st 4x, 3rd 11x, 4th 3x

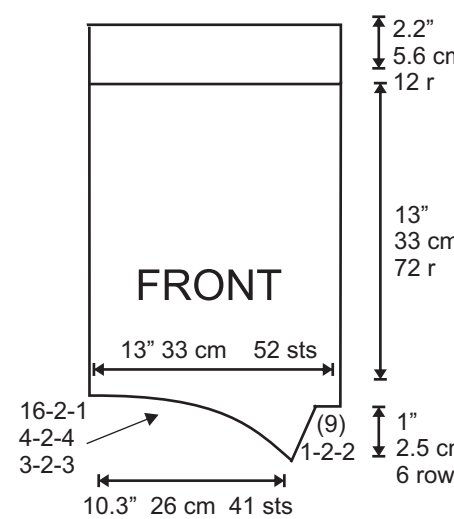
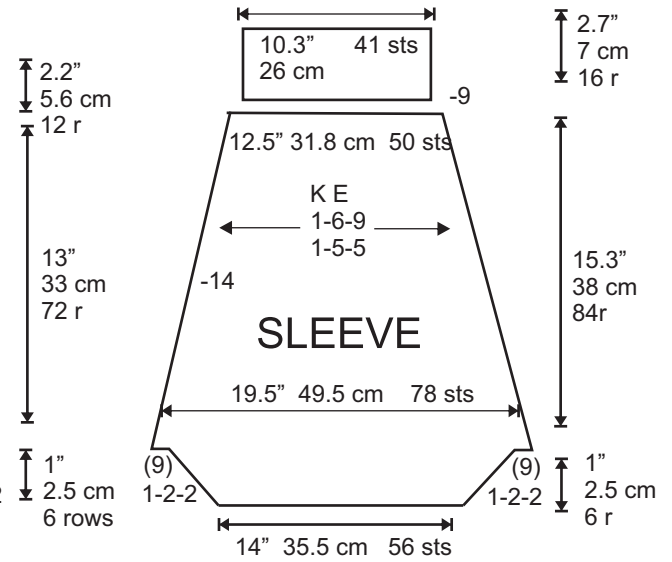
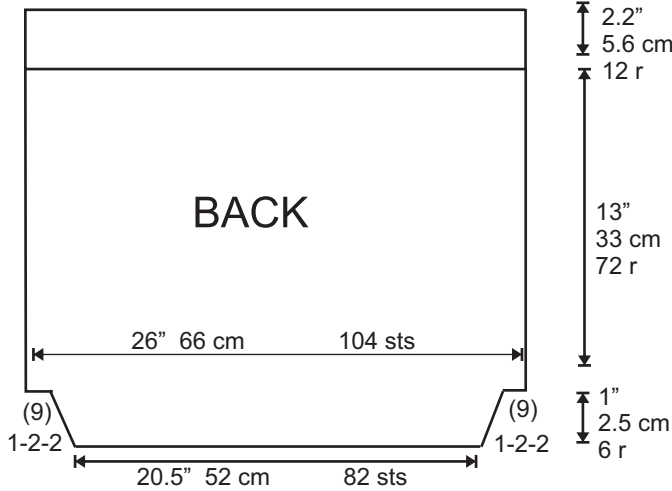
Tier 3 16" 40.6 cm 64 sts  
2.8" 7 cm  
14 r

-18 dec 5th st 3x, 4th 12x, 5th 3x

Tier 2 20.5" 52 cm 82 sts  
3.2" 8 cm  
16 r

-14 dec 7th st 3x, 6th 8x, 7th 3x

Tier 1 24" 61 cm 96 sts  
2.8" 7 cm  
14 r



Numbers at neck edge are amount of stitches to short row. 3-2-3 means short row 3 stitches every 2 rows 3 times. 4-2-3, 16-2-1 means short row 4 stitches every 2 rows 3 times, 16 stitches once.

Begin with all neck sts in hold. Return groups of sts to work position, every 2 rows, as shown.

# Fairisle Yoke Cardigan

Size XXXL Finished Chest 55"

4 sts, 5.5 rows = 1" stockinet

4 sts, 5 rows = 1" Fairisle

## Back Yoke

NB 7.3" 18.5 cm 29 sts

-14 dec 3rd st 13x, 2nd 1x

Tier 4 9.3" 27.4 cm 43 sts 1.8"  
4.6 cm  
9 r

-16 dec 4th st 4x, 3rd 8x, 4th 4x

Tier 3 13.8" 37.6 cm 59 sts 2.8"  
7 cm  
14 r

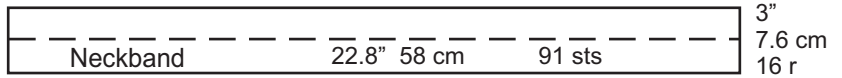
-16 dec 5th st 4x, 4th 9x, 5th 3x

Tier 2 18.3" 47.8 cm 75 sts 3.2"  
8 cm  
16 r

-12 dec 7th st 5x, 6th 3x, 7th 4x

Tier 1 21.8" 55.4 cm 87 sts 2.8"  
7 cm  
14 r

11"  
28 cm  
55 r



## Shaping Notes

Shaping is sts-rows-times;

1-2-2 means 1 st every 2 rows 2 times. When the line slants outwards (raglan seams) these are increases. The number in () is the number of stitches to cast on at base of armhole.

When the line slants inwards (sleeve seams) these are decreases.

- on sleeves means total number of sts to decrease on that side

- on yoke means total number of sts to decrease for that tier.

## Front/Sleeve Yoke

NB 8.3" 21 cm 33 sts

-13 dec 4th st 2x, 3rd 9x, 4th 2x

Tier 4 11.5" 29.2 cm 46 sts 1.8"  
4.6 cm  
9 r

-20 dec 4th st 2x, 3rd 17x, 4th 1x

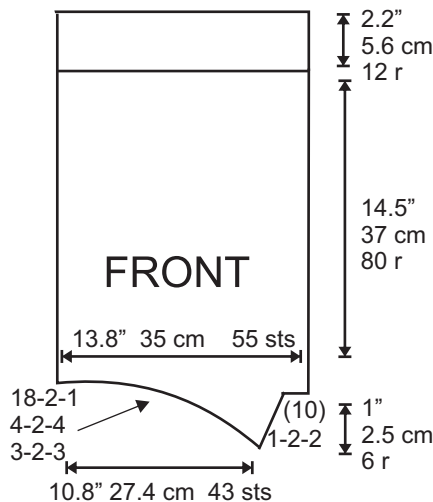
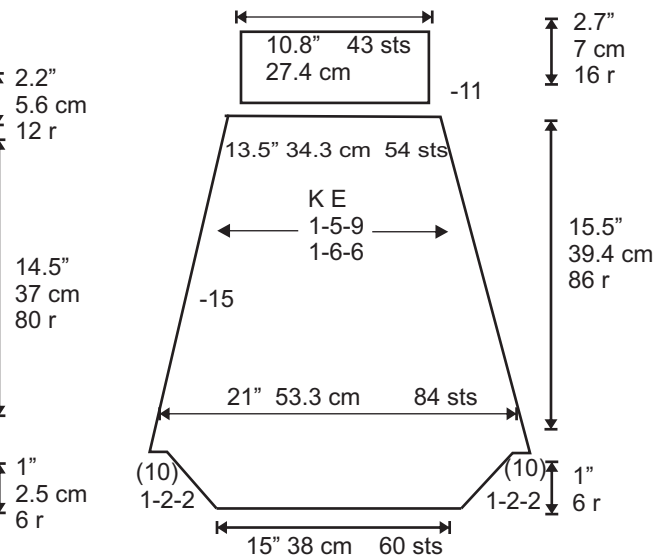
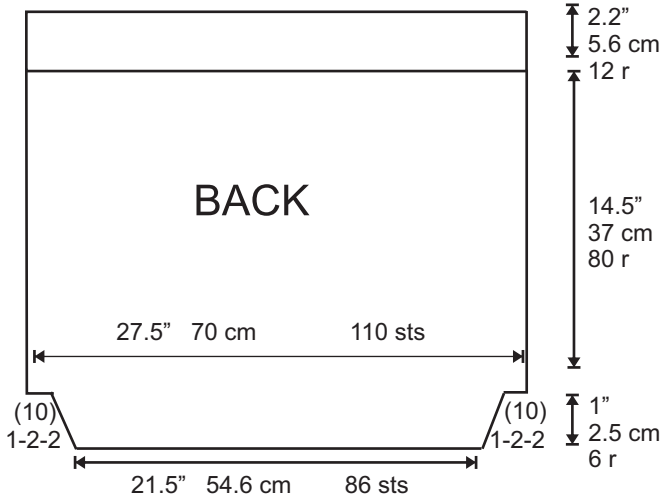
Tier 3 16.5" 42 cm 66 sts 2.8"  
7 cm  
14 r

-20 dec 5th st 1x, 4th 18x, 5th 1x

Tier 2 21.5" 54.6 cm 86 sts 3.2"  
8 cm  
16 r

-16 dec 6th st 16x

Tier 1 25.5" 64.8 cm 102sts 2.8"  
7 cm  
14 r



Numbers at neck edge are amount of stitches to short row.  
3-2-3 means short row 3 stitches every 2 rows 3 times.  
4-2-3, 18-2-1 means short row 4 stitches every 2 rows 3 times, 18 stitches once.

Begin with all neck sts in hold. Return groups of sts to work position, every 2 rows, as shown.